



# Updates from NMDOH

NMAFP Winter Refresher February 2025

Miranda Durham, MD Chief Medical Officer NMDOH

# Objectives

At the end of the session, attendees will be able to:

1. Describe resources available to NM residents through the Department of Health.
2. Learn about some of the work the Department of Health is doing to improve the health of NM
3. Review NM data and clinical updates on public health topics such as syphilis, measles, and rabies

# Disclosures

None

# A little about NMDOH



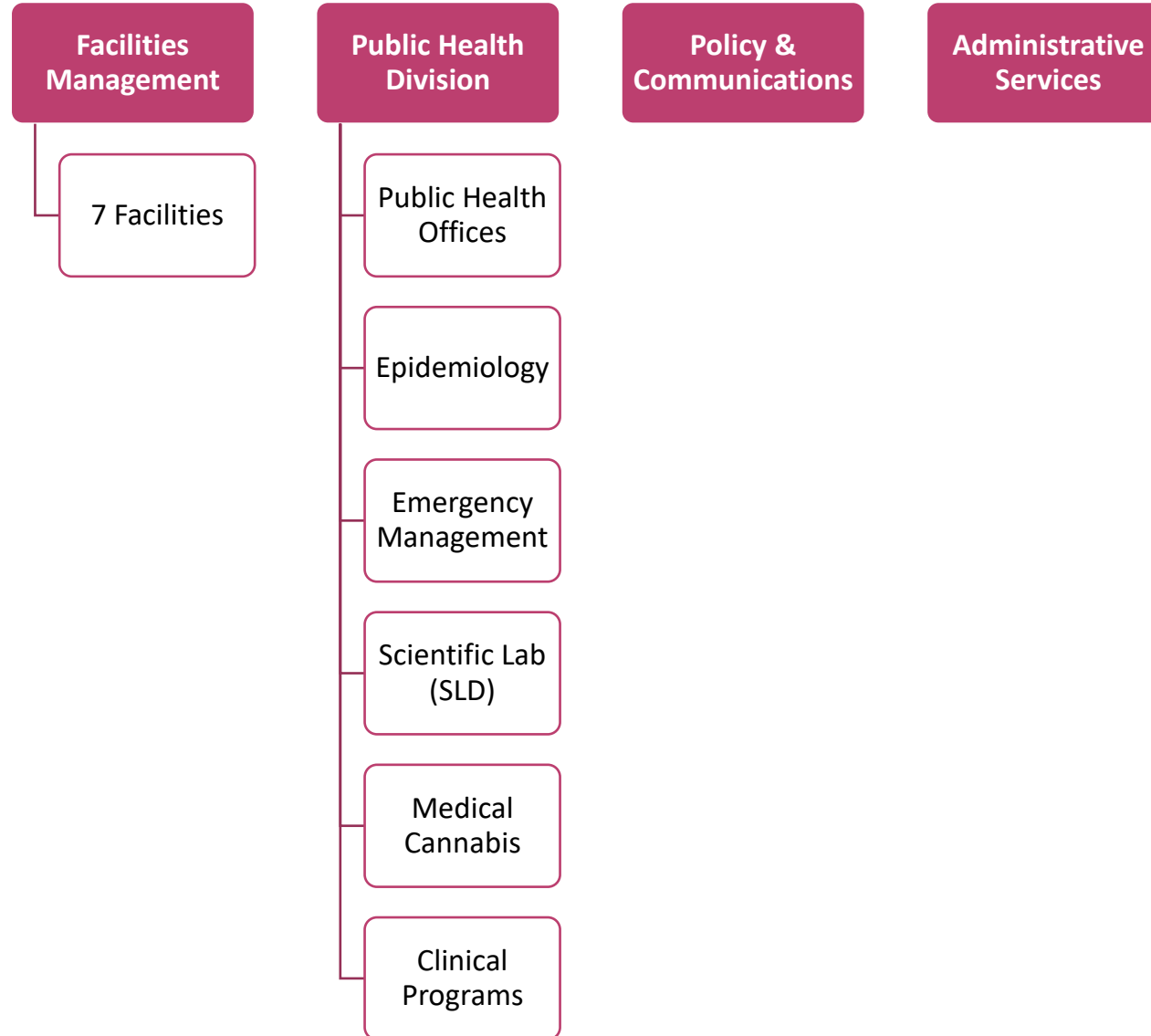
NEW MEXICO INSANE ASYLUM AT LAS VEGAS.

# New Mexico Department of Health



- Started in 1919 (Division of Public Health Nursing) with 4 nurses
- In 1925, public health nurses traveled 130,000 miles, making 10,500 home visits
- Emphasis on providing health care and health education
- Public Health priorities: decreasing infant mortality, improving hygiene, and preventing the spread of communicable diseases: diphtheria, typhoid, TB, malaria

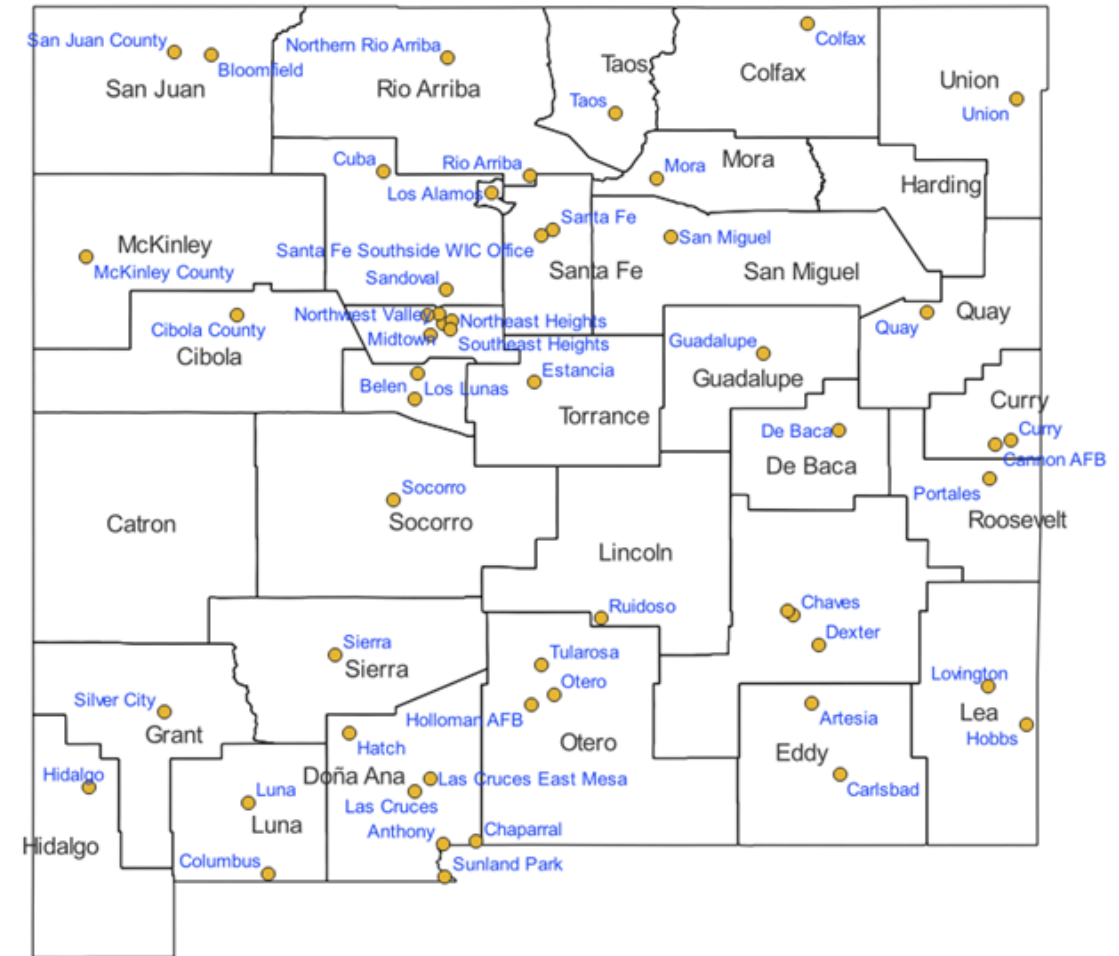
# Department of Health



# Public Health Offices

## Services at the public health offices:

- STD testing and treatment
- Immunizations
- Family Planning
- HIV PrEP and PEP
- TB Care
- Women Infant Children (WIC)
- Medication Assisted Treatment (MAT)
- Hepatitis C
- Harm Reduction
- Children's Medical Services



<https://www.nmhealth.org/location/public/>

# NMDOH Helpline

**NMHealth**  
**Helpline:**  
 Your Unified Health Resource  
**1-833-SWNURSE**  
 (1-833-796-8773)

**MONDAY-FRIDAY**  
 7am-8pm MST

**WEEKENDS**  
 10am-4pm MST

Services available in English and Spanish

Connecting New Mexicans to Health & Wellness

## KEY SERVICES

**Healthcare Connections**

- Find primary care doctors, mental healthcare & specialists.
- Get STI testing & treatment resources.
- Find addiction treatment.

**Health Questions**

- Ask questions about diseases & infections, including food poisoning & animal bites.
- Get advice about COVID & other winter viruses.
- Schedule vaccines for kids & adults.

**Reproductive Health Services**

- Find birth control, including the morning after pill.
- Find an abortion provider & learn about resources.
- Connect to healthy pregnancy resources & prenatal care.

**Provider Support**

- Report notifiable conditions.
- Consult with an epidemiologist.
- Receive help with STD & TB management.

[nmhealth.org](https://www.nmhealth.org)

# NMDOH Facilities

## Treatment

- NM Behavioral Health Institute (NMBHI)
- Turquoise Lodge Hospital
- New Mexico Rehabilitation Center
- Sequoyah Adolescent Treatment Center

## Long-Term Care

- Fort Bayard Medical Center
- New Mexico State Veteran's Home
- The Meadows at NM Behavioral Health Institute

## Supported Living

- Los Lunas Community Program

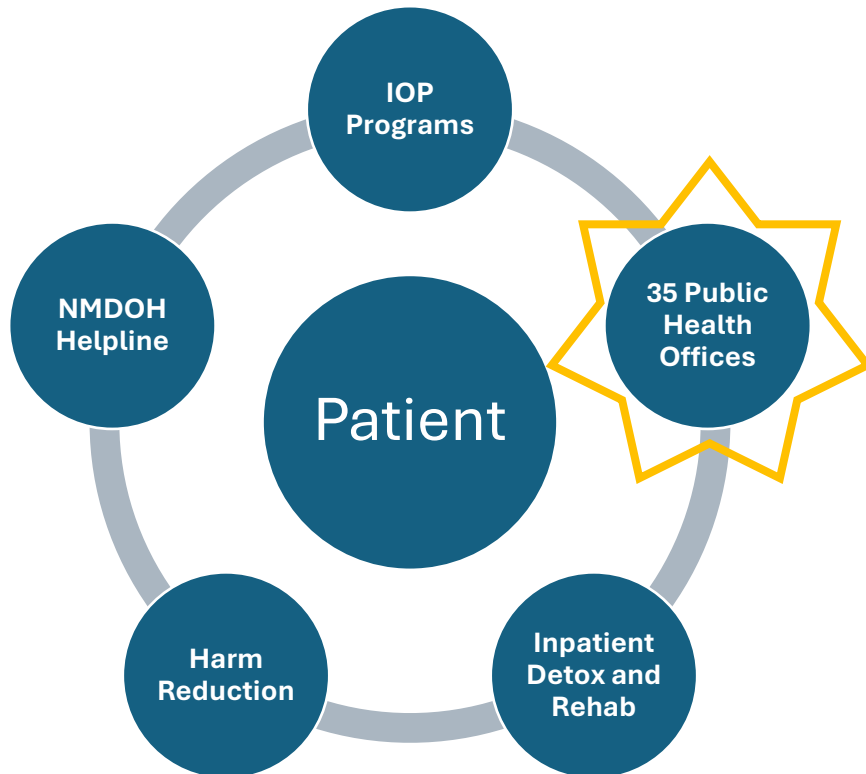


# MAT Services

- The NMDOH **Southwest Pathways Program** started providing MAT services in Las Cruces in 2009
- Turquoise Lodge Hospital was founded in 1953 and NMRC in 1968

SUBOXONE PROGRAM LOCATIONS	OTHER SERVICES	 <p><b>SOUTHWEST PATHWAYS</b> An outpatient Opioid treatment clinic within the New Mexico Department of Health</p>
<p><b>T or C</b> 201 East 4th Street Truth or Consequences, NM 87901 Phone: 575-894-2716 Fax: 575-894-3478</p>	<p><b>NALOXONE TRAINING AND DISTRIBUTION</b></p> <p>«««—————»»»</p> <p><b>FAMILY PLANNING</b></p> <p>«««—————»»»</p> <p><b>RAPID HIV AND HCV TESTING</b></p> <p>«««—————»»»</p> <p><b>MEDICAID ENROLLMENT ASSISTANCE</b></p> <p>«««—————»»»</p> <p><b>HARM REDUCTION SERVICES</b></p>	
<p><b>Alamogordo</b> 1207 8th Street Alamogordo, NM 88310 Phone: 575-437-9340 Fax: 575-434-6629</p>	<p><b>FOR MORE INFORMATION CALL: 575-528-5063</b></p>	
<p><b>Las Cruces</b> 1170 N Solano Las Cruces NM 88001 Phone: 575-528-5063 Fax: 575-528-5039</p>	<p> NEW MEXICO DEPARTMENT OF HEALTH</p> <p>1170 N Solano Las Cruces NM 88001 Phone: 575-528-5063 Fax: 575-528-5039</p> <p><b>MATClinic</b> Medication Assisted Treatment</p>	
<p><b>Silver City</b> 2610 N. Silver, Suite 7 Silver City, NM 88061 Phone: 575-538-5318 Fax: 575-388-4847</p> <p><b>Deming</b> (Coming Soon!)</p>		

# Building out the Pathways Program

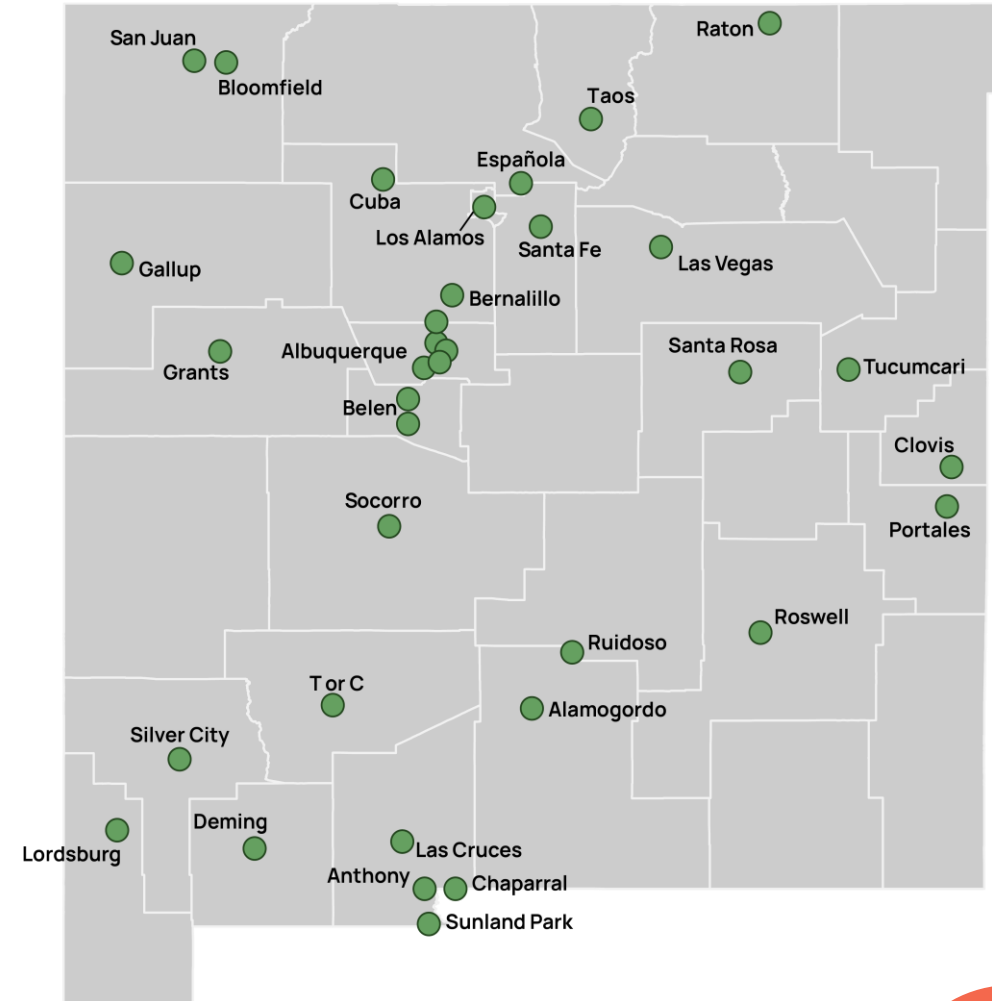


## NMDOH Pathways Program:

- Creates a network of care
- Provides safety net services
- Strengthens connections to care
- Builds on our history of providing patient centered care for vulnerable populations (harm reduction, SW Pathways, Turquoise Lodge and NMRC)

# MAT in Public Health Offices (PHOs)

- 35 offices offer MAT visits
- PHOs have either in-person or remote providers (or both)
- All patients are seen by a nurse for intake, urine drug screen, linkage to care
- Medications prescribed to local pharmacy



# Providing Safety Net Services

- No out-of-pocket costs for visits
- Medication Assistance Program through InMedRx (can cover the cost of suboxone until people get enrolled in Medicaid)
- Providing treatment options for people leaving incarceration
- Low Barrier Model
- Pregnant people and Teens



# New Mexico Pathways pathwaysnm.org



Break **FREE** from Opioids

**FREE** and low-cost medication-assisted treatment can help you get your life back.

Don't wait—  
you deserve a brighter future.  
Visit your local public health office today.

**NMPathways.org**



[Home - New Mexico Pathways](#)

## Midtown Public Health Office

ADDRESS:

2400 Wellesley Dr NE  
Albuquerque, NM 87107

SCHEDULE:

Monday-Friday, 7:30am-4:30pm (Closed 11:30am-12:30pm)

Call 505-841-4170

## Northeast Heights Public Health Office

ADDRESS:

7200 Montgomery Blvd. NE, Suite E1  
Albuquerque, NM 87109

SCHEDULE:

Monday-Friday, 8:00am-5:00pm (Closed 12:00pm-1:00pm)

Call 505-332-4850

## South Valley Health Commons Public Health Office

ADDRESS:

2001 El Centro Familiar SW  
Albuquerque, NM 87105

SCHEDULE:

Monday-Friday, 8:00am-5:00pm (Closed 12:00pm-1:00pm)

Call 505-873-7477

## Southeast Heights Public Health Office

ADDRESS:

7525 Zuni SE  
Albuquerque, NM 87108

SCHEDULE:

Monday-Friday, 8:00am-5:00pm (Closed 12:00pm-1:00pm)

Call 505-841-8928

## Cibola County Public Health Office

ADDRESS:

700 E. Roosevelt, Suite 100  
Grants, NM 87020

SCHEDULE:

Monday-Friday, 8:00am-5:00pm (Closed 12:00pm-1:00pm)

Call 505-285-4601

## Clovis Public Health Office

ADDRESS:

1216 Cameo  
Clovis, NM 88101

SCHEDULE:

Monday-Friday, 8:00am-5:00pm (Closed 12:00pm-1:00pm)

Call 575-763-5583

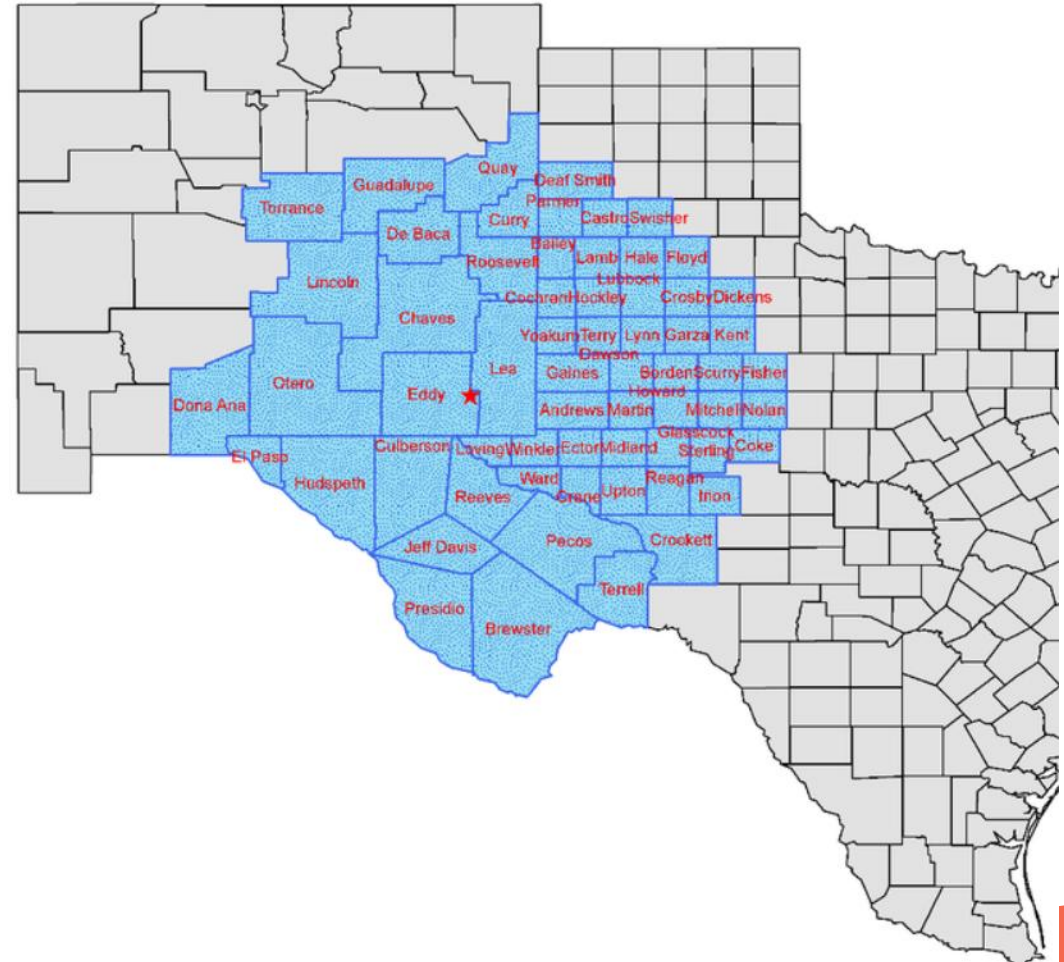
# Public Health Updates



# Measles Outbreak

As of February 14:

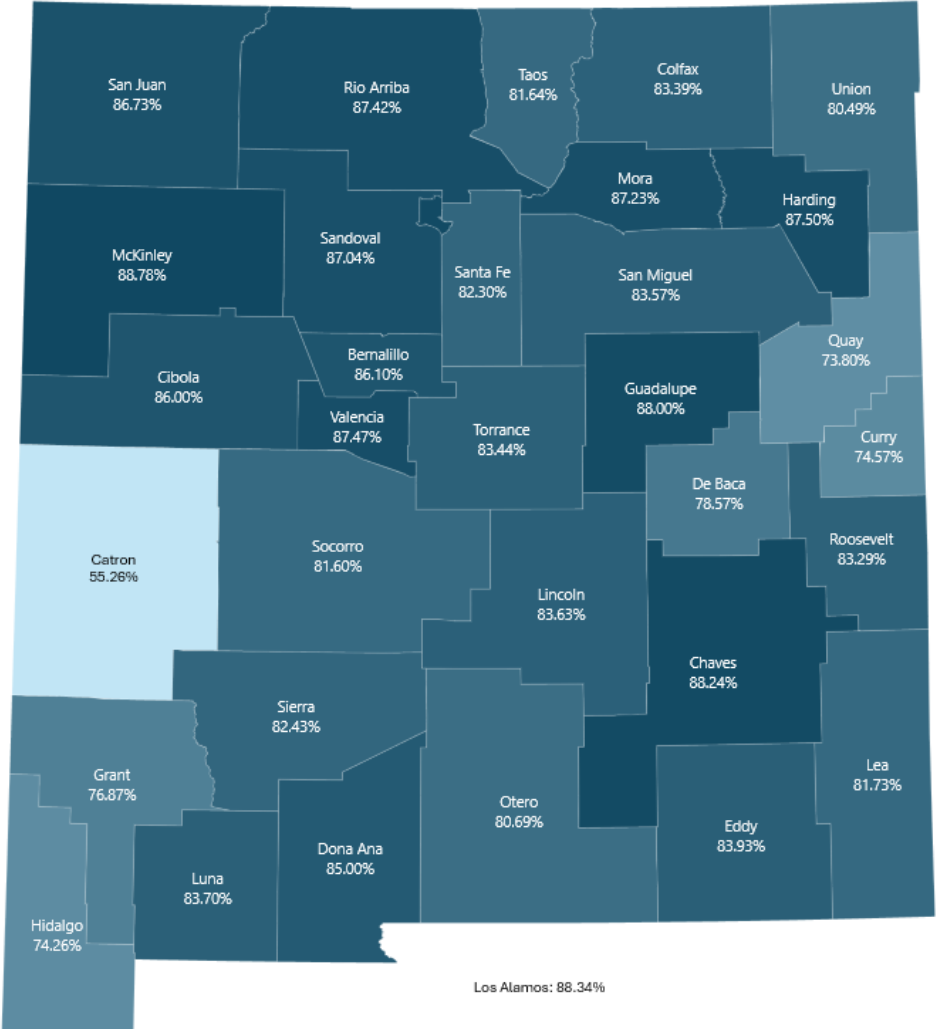
- 3 measles cases in Lea County, NM (with 386 contacts)
- 48 cases in West Texas
  - Gaines, Lynn, Terry and Yoakum counties
  - 13 people hospitalized
  - 42 are under 18yo
  - 18% vaccine exemption rate in Gaines County



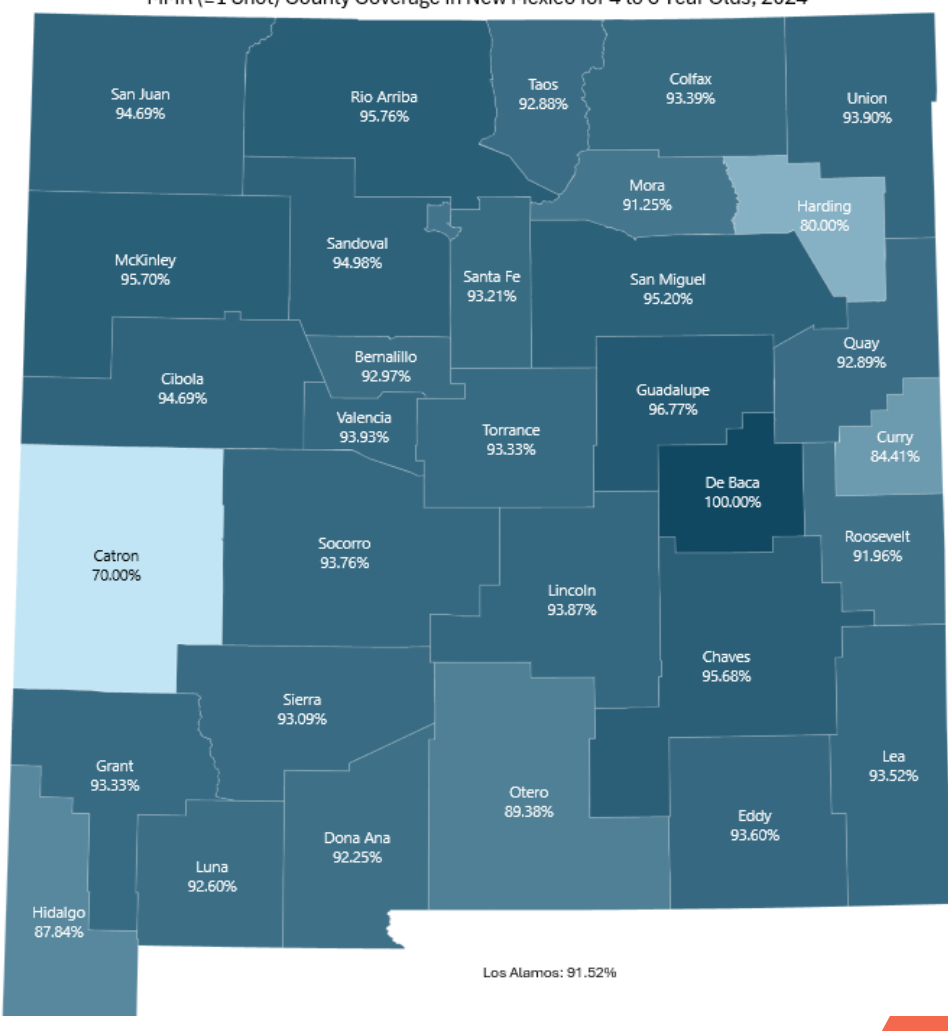
# Vaccination Rates NM

## Pre-K versus Kindergarten rates

MMR (≥1 Shot) County Coverage in New Mexico for 1 to 4 Year Olds, 2024



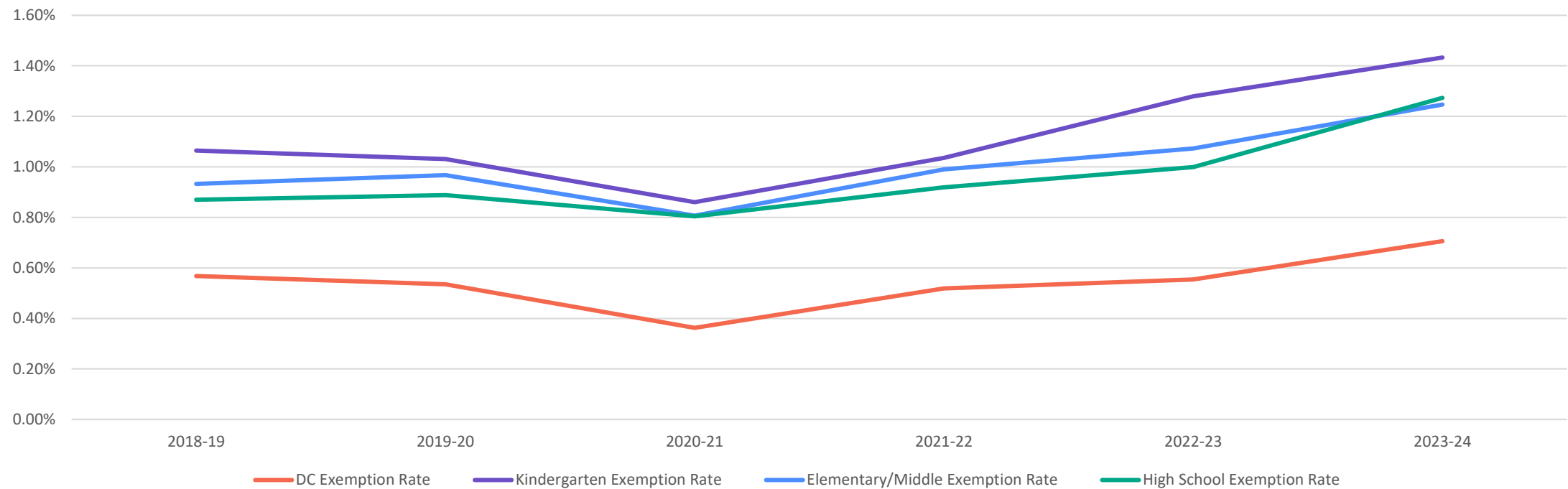
MMR (≥1 Shot) County Coverage in New Mexico for 4 to 6 Year Olds, 2024





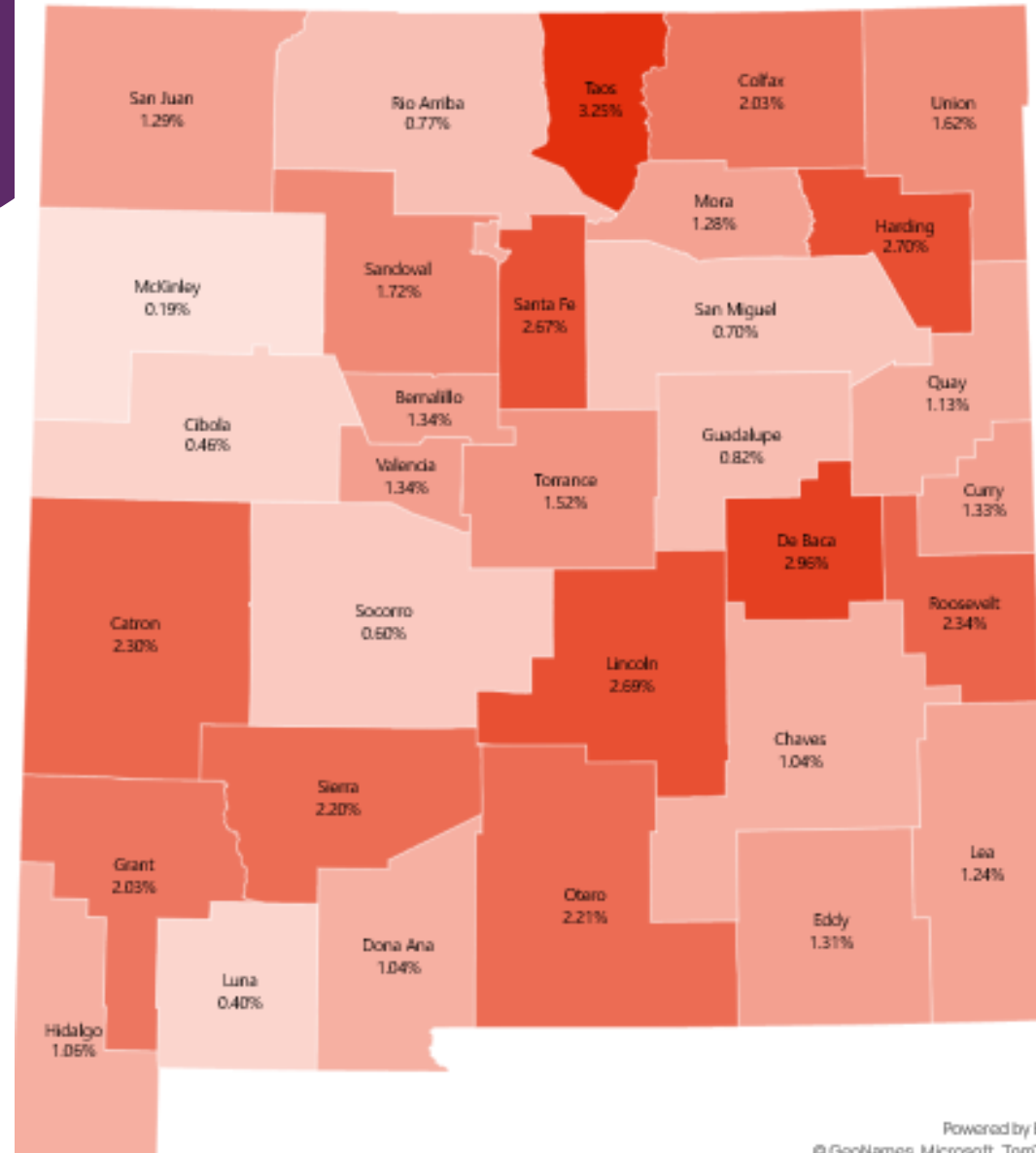
# Exemption Rate Trends in New Mexico

Required School Vaccine Exemption Rates by School-Age Groups in New Mexico, School Years 2018-19 to 2023-24



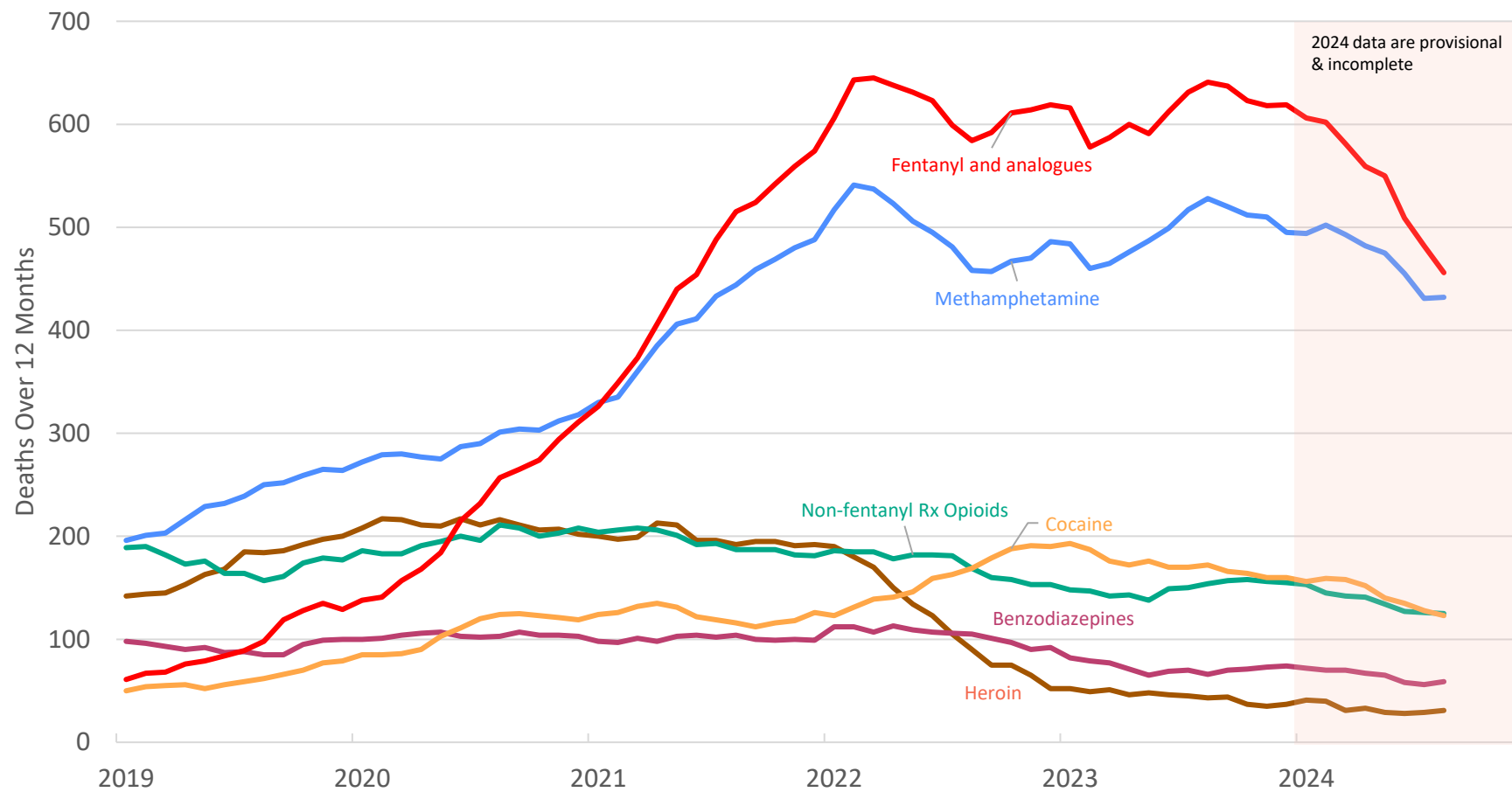
# Exemption Rate Trends in New Mexico

Required School Vaccine Exemption Rates in New Mexico, School Year 2023-2024



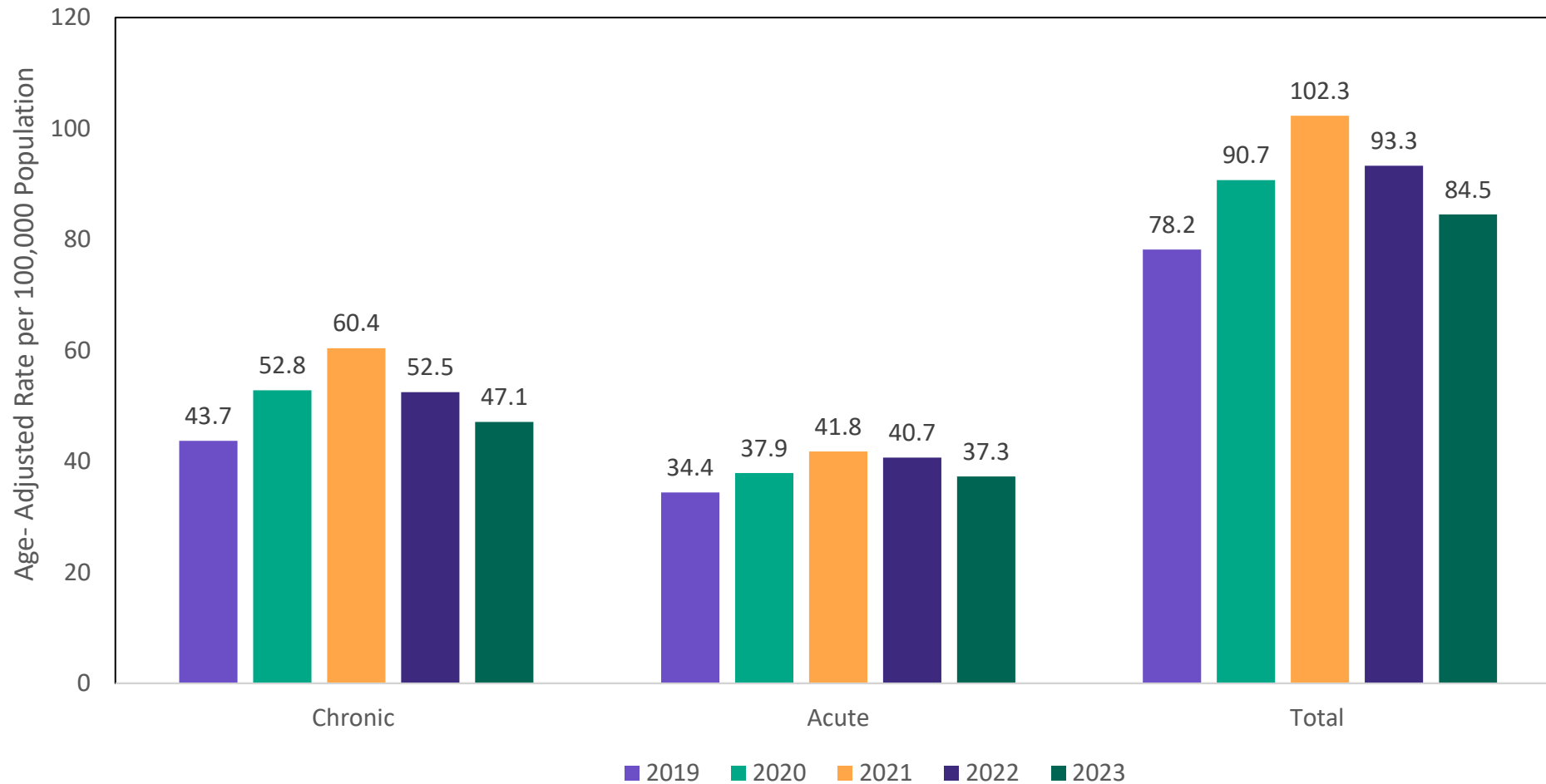
# Drug Overdose Deaths

12 Month Running Totals of Overdose Deaths by Drug Class, NM, 2019-2024 (provisional)



Source: New Mexico Department of Health Bureau of Vital Records & Health Statistics death certificate data  
Drug types are not mutually exclusive  
Each point represents the sum of the prior 12 months.  
2024 data are provisional and subject to change

# Age-Adjusted Death Rate\* from Excessive Alcohol Use, New Mexico, 2020-2022



# Interventions

- Evidence Based Treatments
- Narcan
- Harm Reduction
- Adulterant Checking
- Prescription Monitoring Program (PMP)
- Provider Education
- Monitoring Trends (epidemiology work)
- Increasing Public Awareness
- Coordination of care
- Stigma Reduction

An advertisement for Naloxone. It features a woman with long dark hair and a teal shirt on the right side. The background is a gradient of purple and blue. The text on the left reads: "Naloxone Saves Lives. Naloxone, also known by the brand name Narcan, is a medication that reverses the effects of an opioid overdose. Naloxone is safe and effective to use in any situation where there is a suspected opioid overdose." Below the text is a white button with the text "Order Free Naloxone".

**Naloxone Saves Lives.**

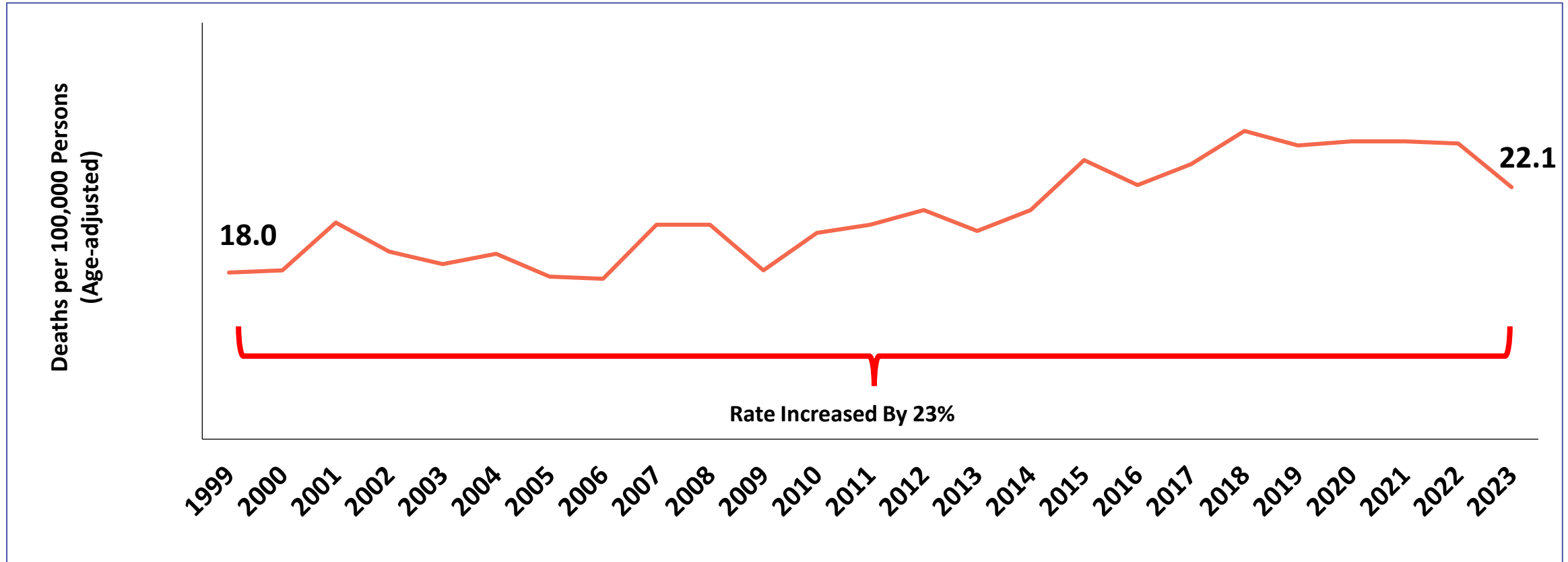
Naloxone, also known by the brand name Narcan, is a medication that reverses the effects of an opioid overdose. Naloxone is safe and effective to use in any situation where there is a suspected opioid overdose.

[Order Free Naloxone](#)

[NMDOH Harm Reduction | Transforming Lives for Healthier Communities](#)

# Suicide Deaths

New Mexico, 1999 - 2023



Source: 1999-2023 NM Death Data: BVRHS

# NM Suicide 2023 Data

In 2023, New Mexico had:

- A 9% overall decrease in suicide rate from 2022
  - **41.3% reduction in suicide deaths among women**
  - **42.2% reduction in suicide deaths among American Indian/Alaska Native**
  - **29.5% increase in suicide death among Hispanic males**
- The **fifth highest rate of suicide** in the United States
- A suicide rate **62% higher than the US rate**

**Note:** Rates reported in this presentation are age-adjusted unless otherwise stated

**Source:** 2023 CDC Wonder

# Interventions

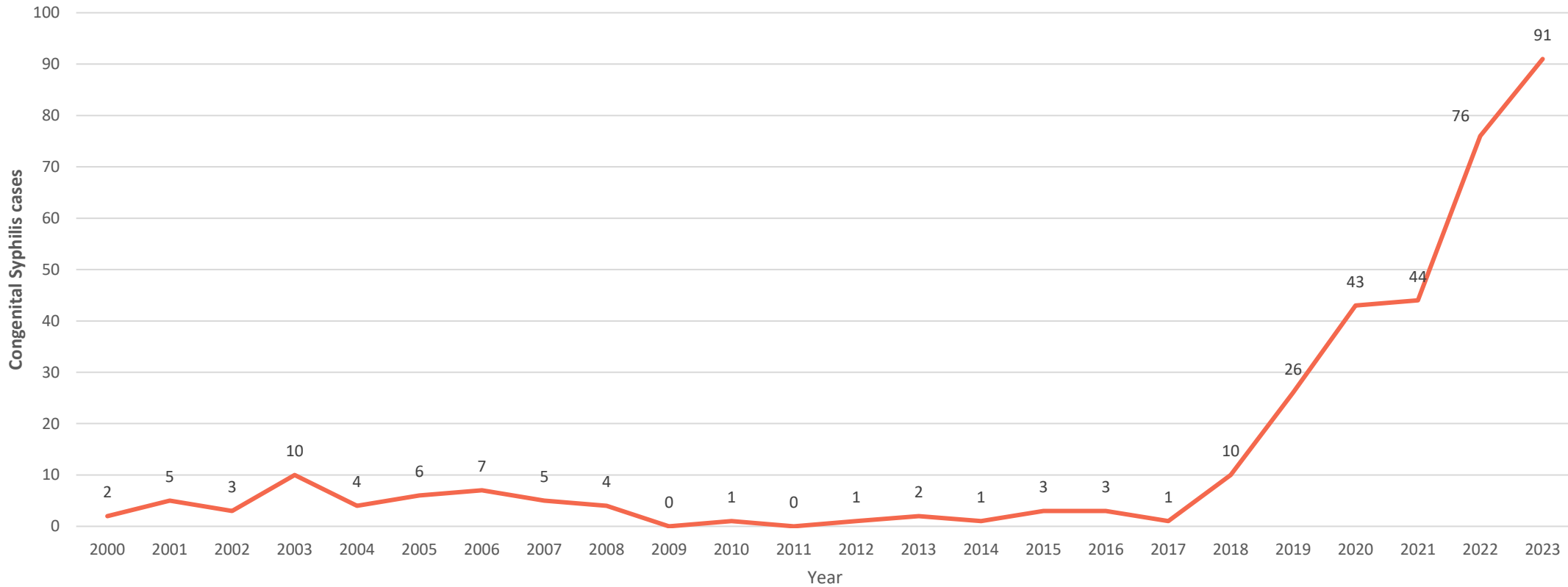
- The NMDOH suicide prevention program works with providers throughout the state to deliver evidence-based suicide prevention programs and services to residents of New Mexico
- Evidence Based Programs: QPR (Question, Persuade, Refer), Yellow Ribbon, Talk Saves Lives and Breaking the Silence, and the Gun Shop Project; Secondary Prevention of Suicide in the Emergency Department (ED) Program
- Gun Lock distribution
- 988

A large yellow circle containing the text "call or text" in black, the number "988" in large green font with black outlines, and the phrase "anyone. any struggle. anytime." in black below it.

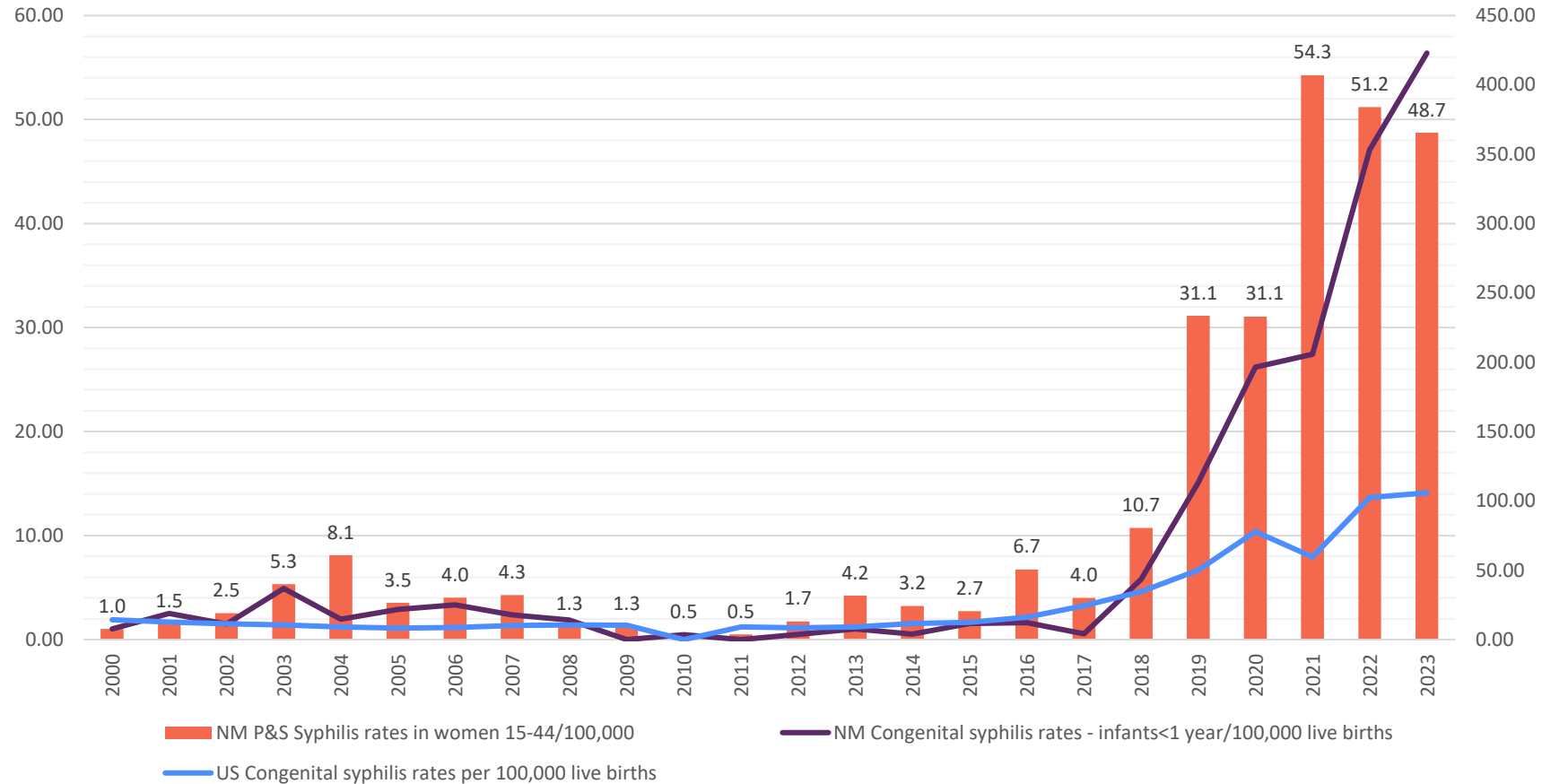
**call or text**  
**988**  
**anyone.**  
**any struggle.**  
**anytime.**



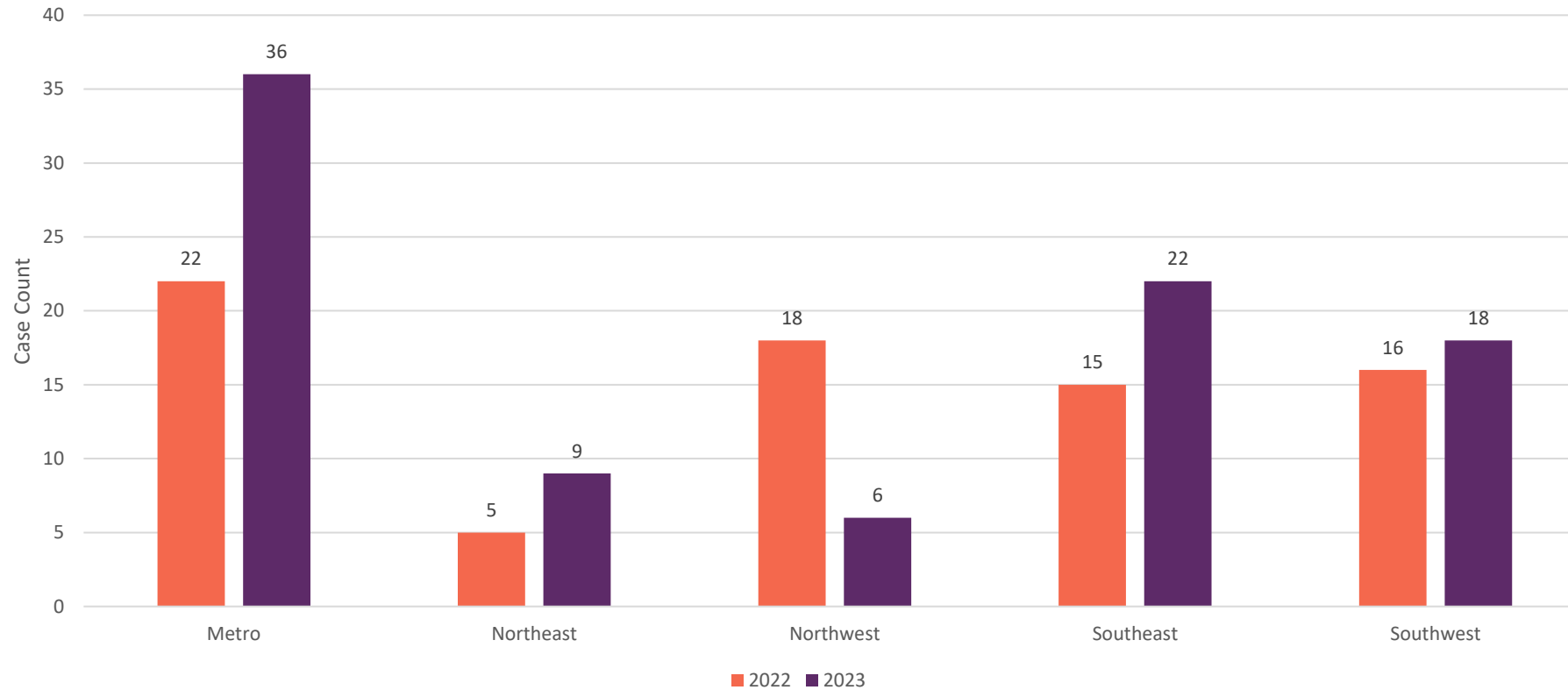
# Congenital Syphilis case counts in infants <1 year, New Mexico, 2000 - 2023



# Congenital Syphilis rates in infants <1 year, per 100,000 live births, New Mexico and US, and Primary and Secondary Syphilis rates in women aged 15 - 44, per 100,000 population New Mexico, 2000 - 2023

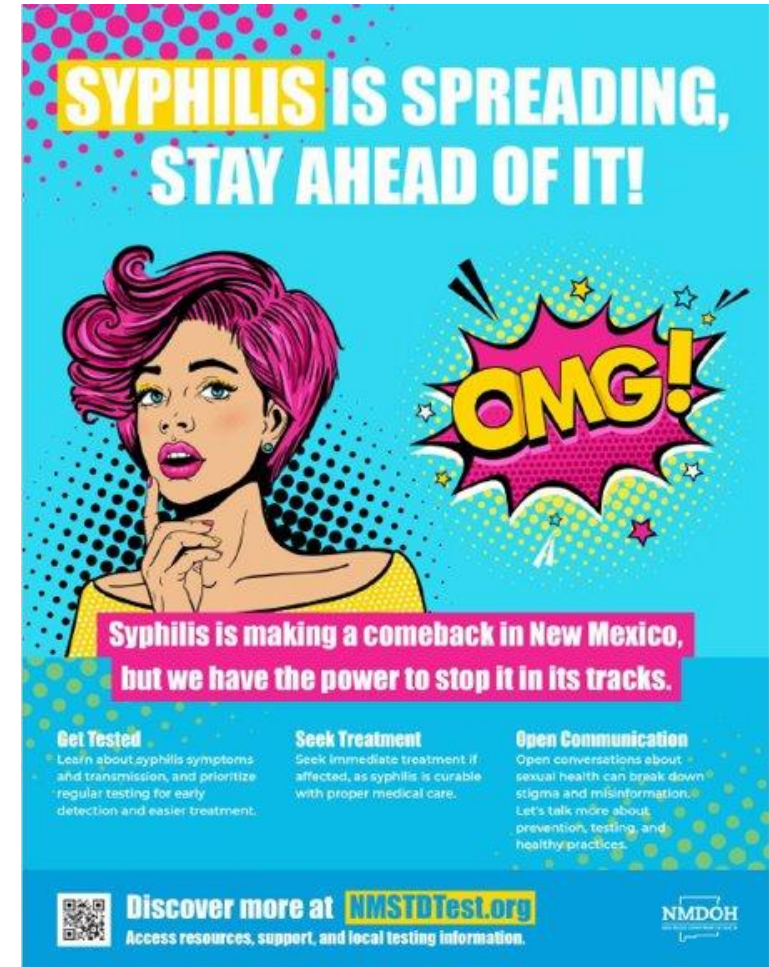


# Congenital Syphilis *Cases* by Region, 2022 – 2023, New Mexico



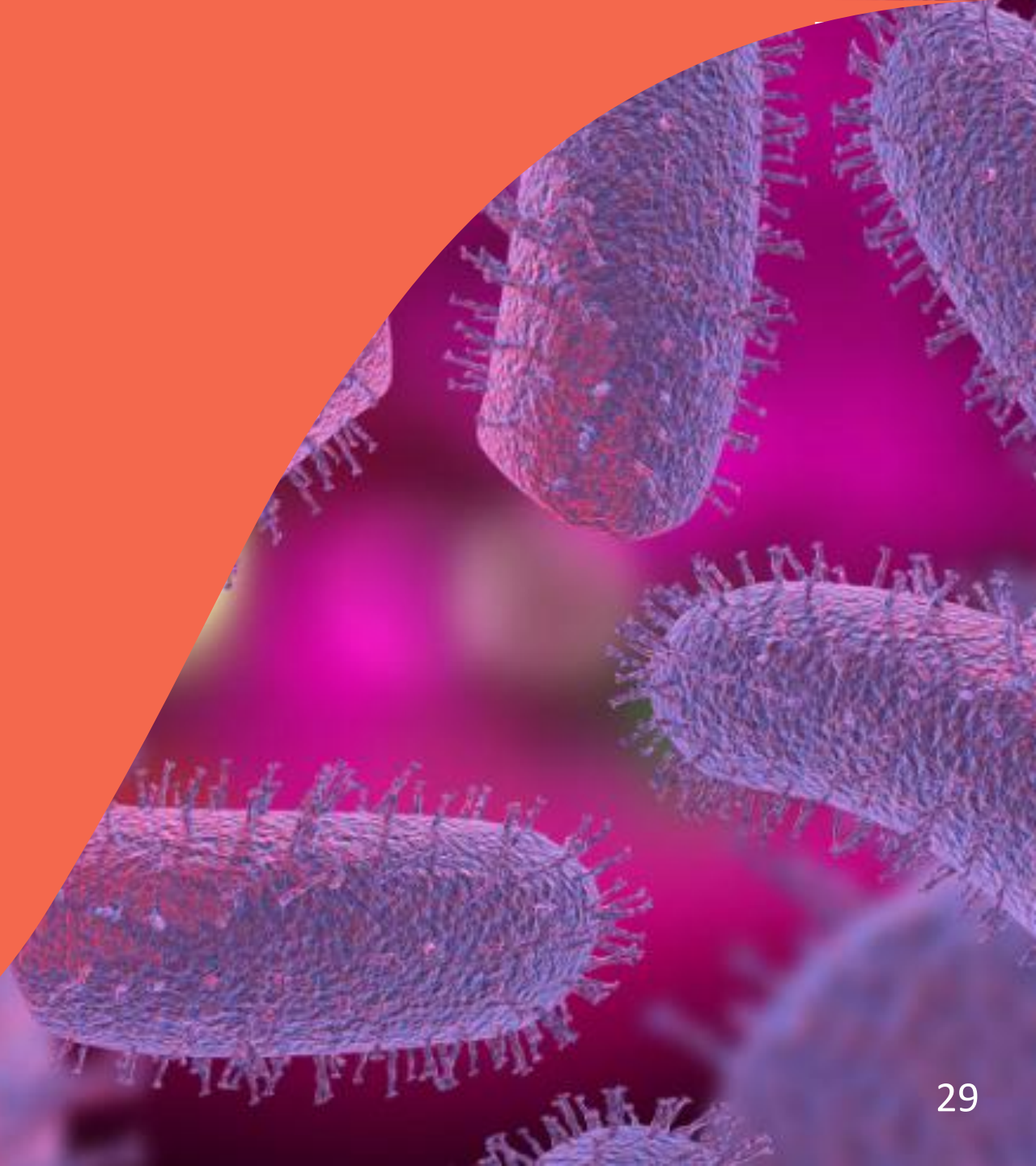
# Interventions

- Doxy-PEP
- Help Line
- Expanded testing/screening
- Disease Intervention Specialists
- Testing in non-traditional healthcare sites
- Outreach, outreach, outreach



# Rabies

*(Rabies lyssavirus)*



# Human Rabies Worldwide

- An estimated 59,000 people die from rabies every year worldwide – 40% are children.
- 99% of these infections are transmitted from dogs.
- In 2015, the World Health Organization set a goal of zero human dog-mediated rabies deaths by 2030, worldwide.



# RABIES in the US

## Each year in the US:

- about 4 million animal bites
- 800,000 seek medical attention
- 60,000 receive PEP following an exposure.
- 1 – 5 cases of human rabies

Since 1990, most cases have been from bats

NEWS | BAY AREA & STATE

## California teacher dies of rabies after being bitten by bat inside classroom

By **Sam Mauhay-Moore**, Trending News Reporter  
Nov 29, 2024

News Release

Sept. 27, 2024

[Contact information](#)

## State reports rare human death from rabies

Health officials reminding people that bats in Minnesota can have rabies and there are steps to take if you have potential contact with a bat

N. KY MAN DIES AFTER CONTRACTING RABIES, FIRST CONFIRMED RABIES CASE IN KY. SINCE 1996

DECEMBER 30, 2024 STATE NEWS

# Public Health PSA

- Before 1960, several hundred people died each year of rabies in the US
- Coordination between human and animal health experts have decreased human rabies cases
  - Successful vaccination of pets and animal control programs,
  - Public health tracking and testing of human and animal rabies cases
  - The availability and use of rabies post-exposure prophylaxis (PEP).

In 2023, a 6-week-old stray kitten died from rabies in Nebraska .

Raccoon variant is not normally found west of the Appalachian Mountains.

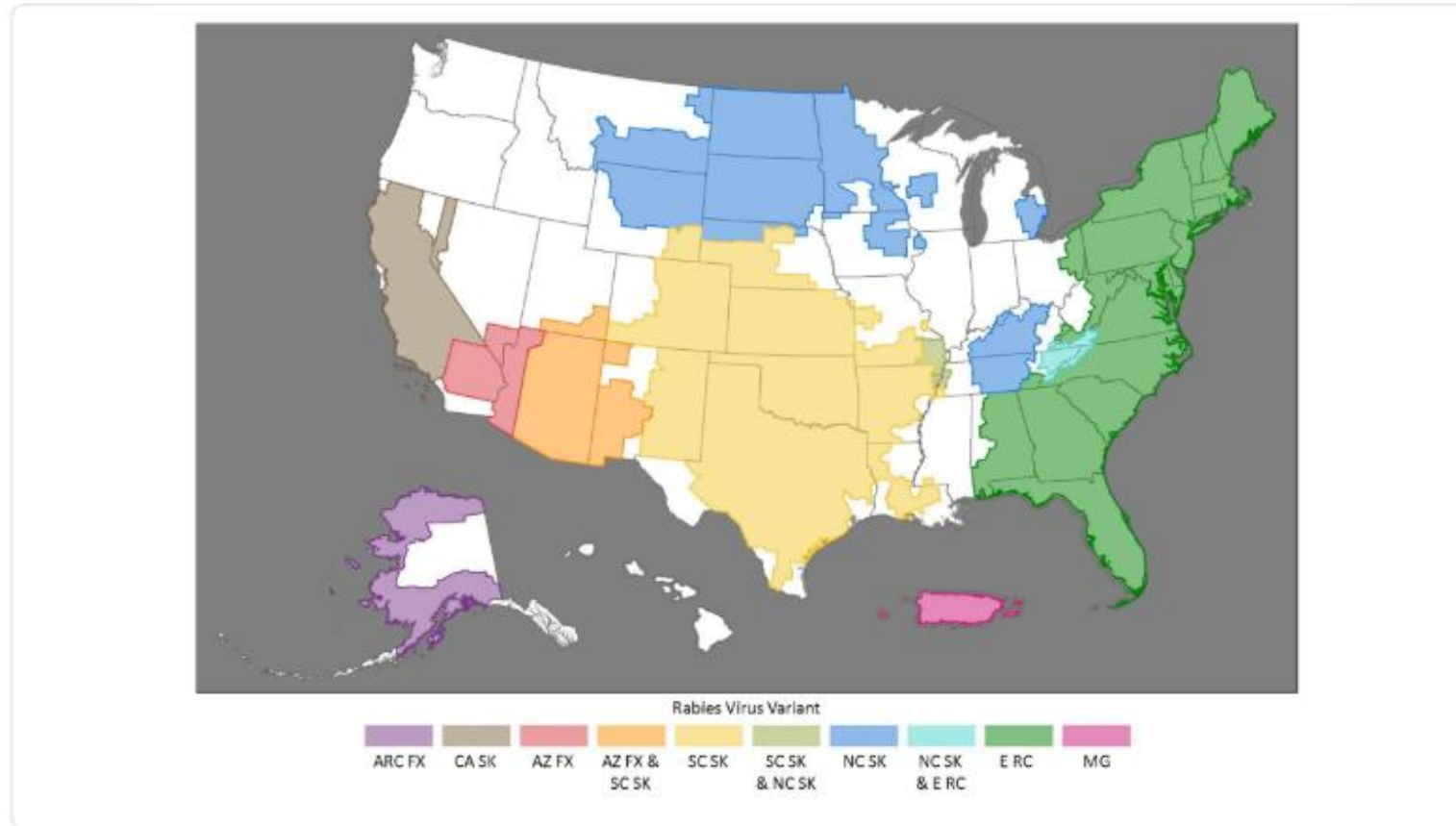
The response:

- More than 750 raccoons and 41 skunks vaccinated around the area where the kitten was found
- Tested 250 dead animals
- 18,000 packets of oral rabies vaccine around the area (targeting racoons)





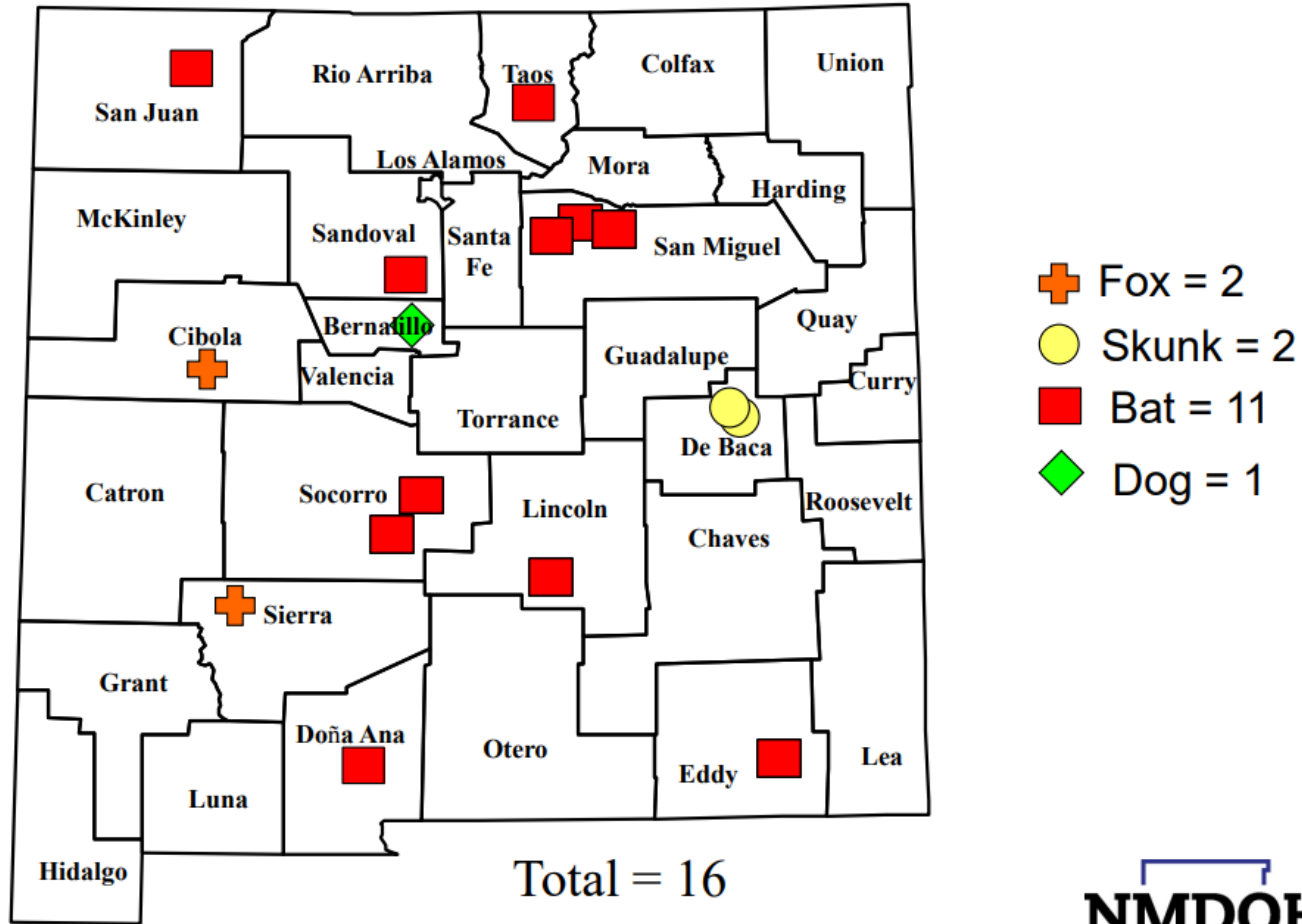
# Rabies in the United States: Protecting Public Health | Rabies | CDC



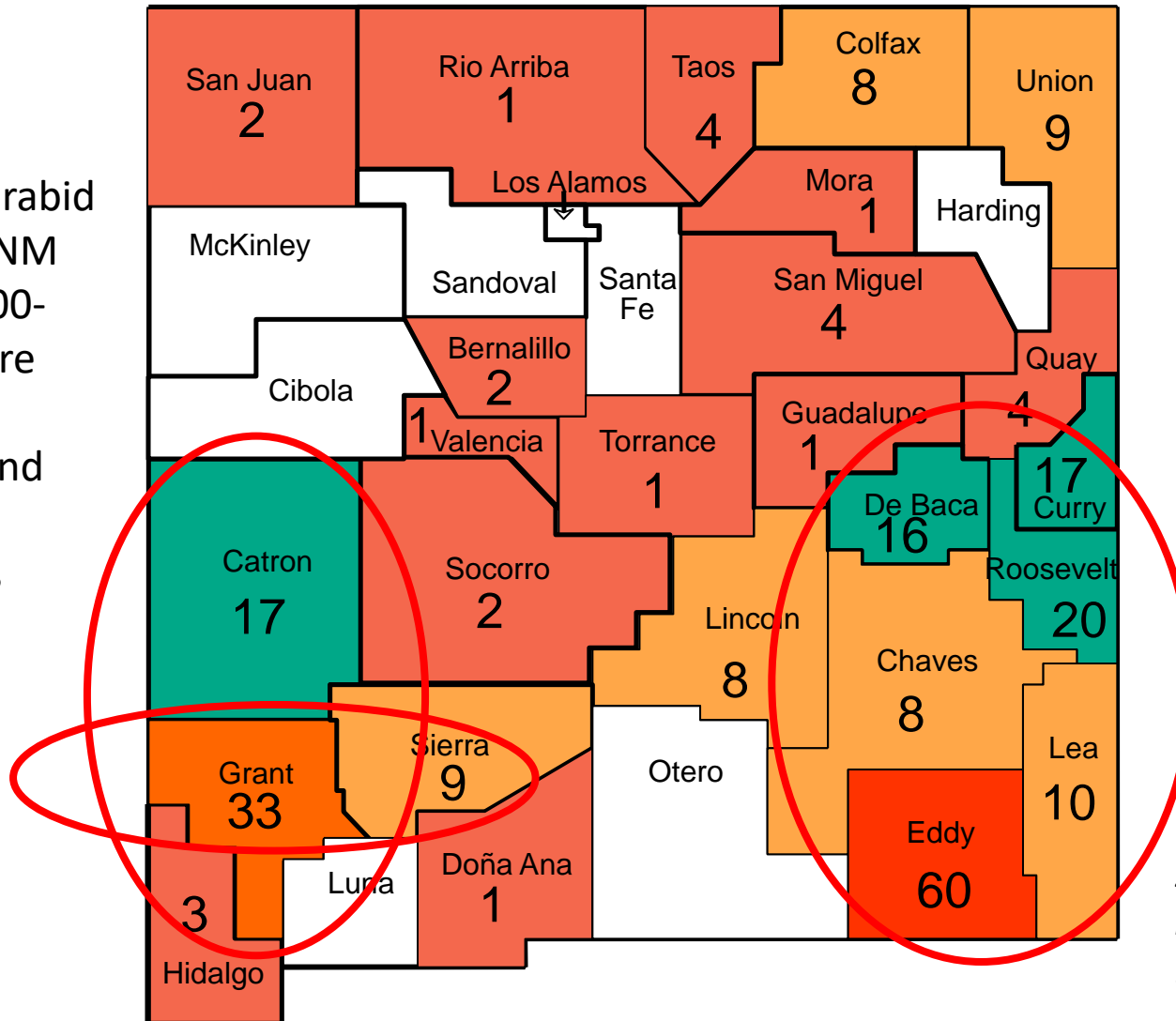
Rabies variant territories in the U.S.

Rabies Virus Variant territories in the United States. Abbreviations: ARC FX = Arctic Fox, CA SK = California Skunk, AZ FX = Arizona Gray Fox, SC SK = South Central Skunk, NC SK = North Central Skunk, E RC = Eastern Raccoon, MG = Mongoose

# Animal Rabies by County, New Mexico, 2023



# Terrestrial Rabies by County, NM 2000 – Oct 2024



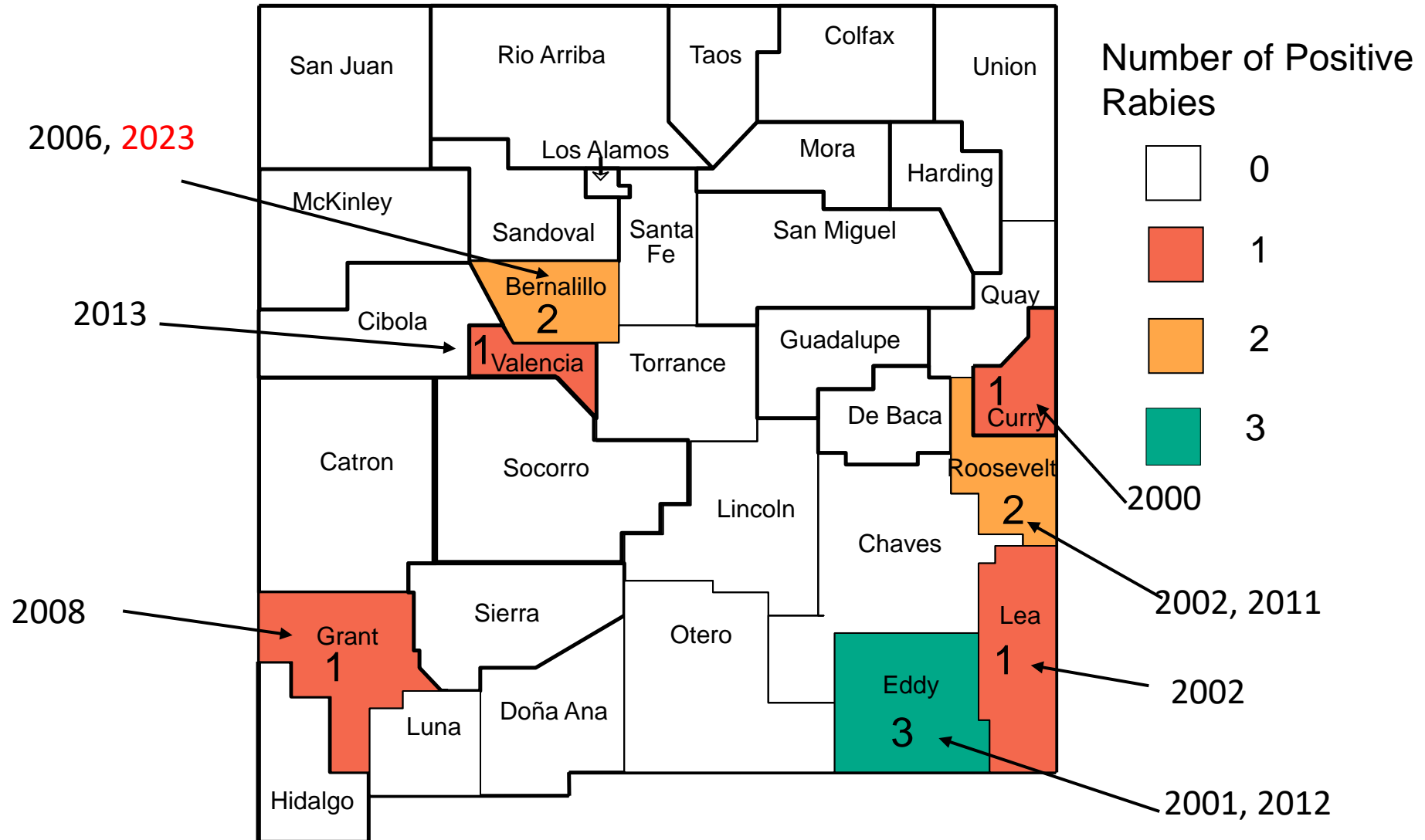
40 of 64 rabid foxes in NM from 2000-2023 were found in Catron and Grant Counties

100 of 130 rabid skunks in NM from 2000-2023 were found in SE NM

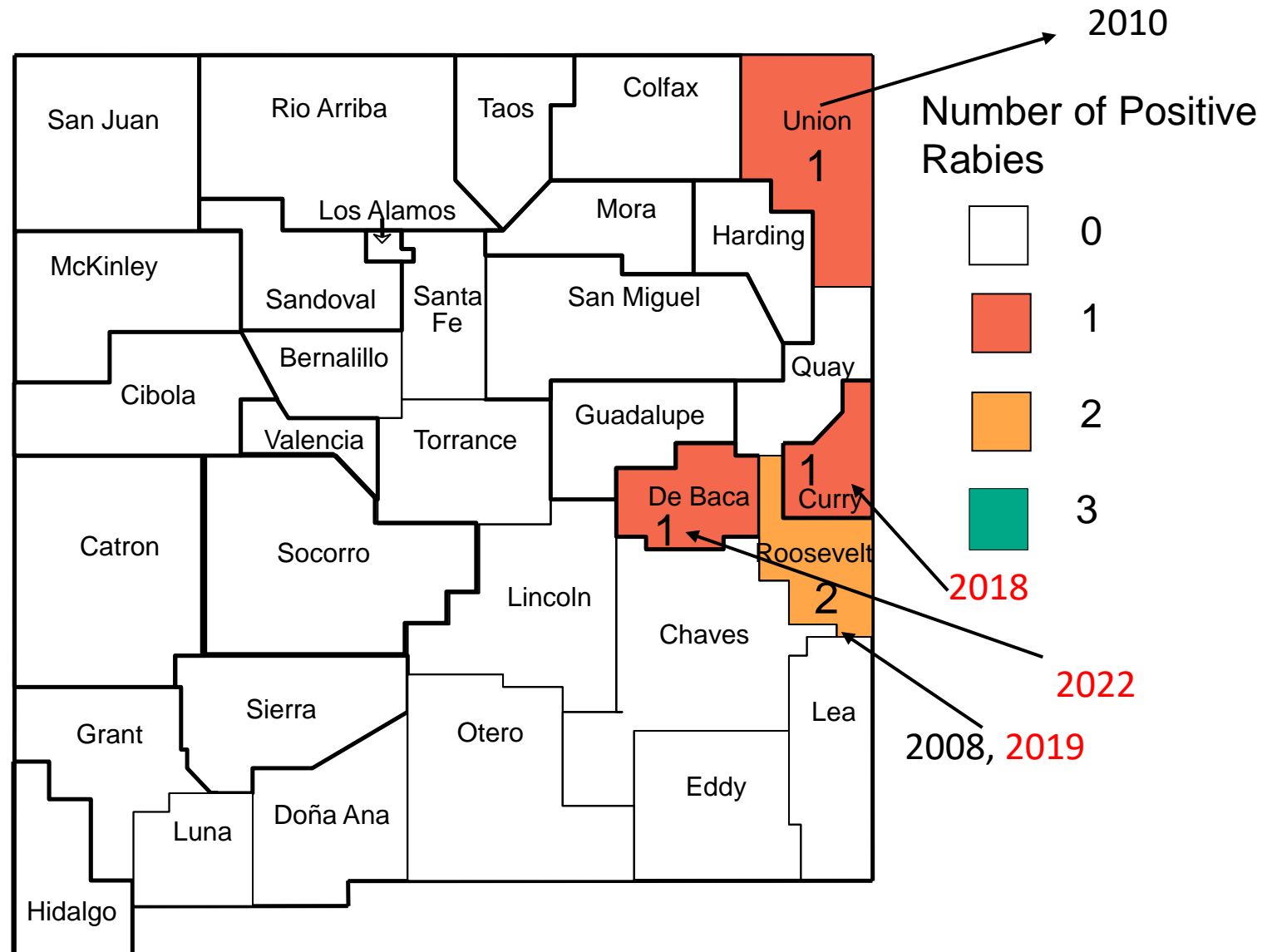
4 rabid bobcats in Sierra and Grant counties in 2024

2011-2012 skunk rabies outbreak in Eddy County

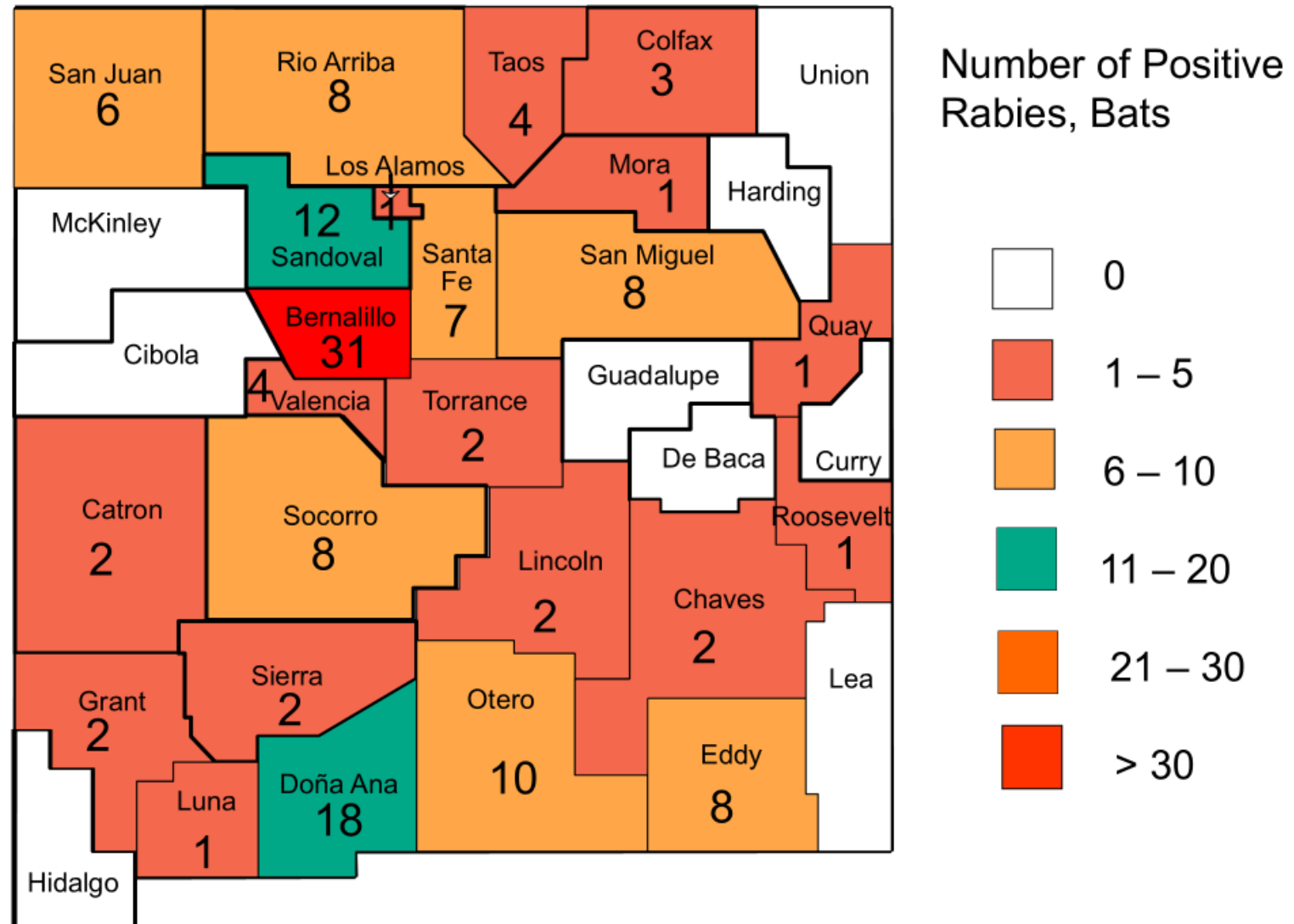
# Dog Rabies by County, NM 2000 – Oct 2024



# Cat Rabies by County, NM 2000 – Oct 2024



# Bat Rabies by County, NM 2000 – Oct 2024



# Other rabid animals in New Mexico 1966-2023

- Bobcat
- Raccoon
- Sheep
- Ringtail
- Coyote
- Horse
- Cow



Rabbits and rodents do not normally transmit rabies

# What is an “exposure” ?

## **Rabies is transmitted via:**

- Direct contact of saliva or neural tissue with a break in the skin or mucous membranes
- Transmission via aerosol, laboratory and organ transplant has been reported but extremely rare

## **Rabies is NOT transmitted via:**

- Petting a rabid animal
- Contact with blood, urine or feces of a rabid animal
- Contact with dried material – rabies is not transmissible after it dries out or after exposure to sunlight.



# What is a BAT “exposure” ?

- Virtually any contact with a bat is considered an exposure
- A bat found in the same room as a small child or someone who was sleeping or incapacitated

Dato VM, Campagnolo ER, Long J, Rupprecht CE. A Systematic Review of Human Bat Rabies Virus Variant Cases: Evaluating Unprotected Physical Contact with Claws and Teeth in Support of Accurate Risk Assessments. PLoS One. 2016 Jul 26;11(7):e0159443. doi: 10.1371/journal.pone.0159443. PMID: 27459720; PMCID: PMC4961291.

## 41 bat-variant human rabies cases 1990 – 2015:

- 7 had a known bat bite
- 10 had confirmed unprotected physical contact
- 7 had probable unprotected physical contact
- 17 had unknown history of bat exposure



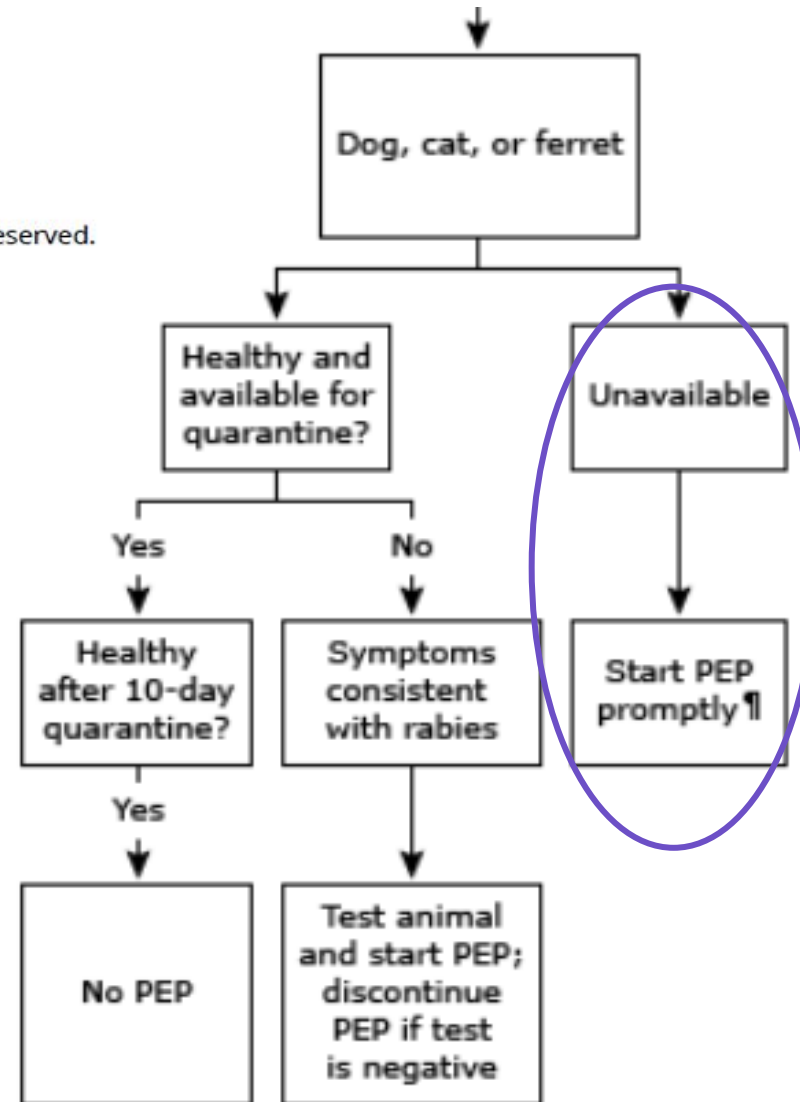
# WHAT DO YOU MEAN, NO PEP?!



Official reprint from UpToDate®  
www.uptodate.com © 2023 UpToDate, Inc. and/or its affiliates. All Rights Reserved.



Wolters Kluwer



*“¶ In areas without an endemic, terrestrial strain of rabies (eg, dog, raccoon, skunk, fox, mongoose), contact local public health authorities for risk assessment.”*

# Rabies PEP in NM

New Mexico is a **low-risk** area for terrestrial rabies: see factors for consideration

**All BAT exposures get rabies post-exposure prophylaxis**

Contact NM DOH Epidemiology for guidance: 1-833-SWNURSE

## Factors for consideration:

- How likely was the biting animal to have been exposed to a rabid wild animal? (indoor vs. outdoor vs. stray)
- Local epidemiology?
- Health status – symptoms?
- Vaccination status of the animal?
- Was the bite provoked?

# Rabies Transmission: Bites



The virus can only be transmitted after virus has reached the brain and is being excreted in saliva



Dogs and cats will be obviously symptomatic soon after the virus reaches the brain



If they are healthy 10 days after the bite, no transmission could have occurred; this is the rationale for the 10-day observation period of animals after a bite

Treatment	Regimen
Wound Cleansing	<ul style="list-style-type: none"> <li>All PEP should begin with immediate thorough cleansing of all wounds with soap and water. If available, a virucidal agent such as a povidone-iodine solution should be used to irrigate the wounds.</li> </ul>
HRIG	<ul style="list-style-type: none"> <li>If possible, the full dose should be infiltrated around any wound(s) and any remaining volume should be administered IM at an anatomical site distant from vaccine administration. Also, HRIG should not be administered in the same syringe as a vaccine. Because HRIG might partially suppress the active production of antibodies, no more than the recommended dose should be given.</li> </ul>
Vaccine	<ul style="list-style-type: none"> <li>HDCV or PCECV 1.0 mL, intramuscularly in the deltoid area (for children anterolateral aspect of the thigh is acceptable), one each on days 0, 3, 7, and 14. A fifth dose on day 28 is recommended for persons with a confirmed or suspected immune disorder. Vaccines should never be administered in the gluteal area.</li> </ul>

## CDC Guidelines: Rabies PEP for non-immunized Individuals

[Rabies Post-exposure Prophylaxis | Rabies | CDC](#)

Treatment	Regimen
Wound cleansing	<ul style="list-style-type: none"> <li>All post-exposure prophylaxis should begin with immediate thorough cleansing of all wounds with soap and water. If available, a virucidal agent such as a povidone-iodine solution should be used to irrigate the wounds.</li> </ul>
RIG	<ul style="list-style-type: none"> <li>RIG should NOT be administered.</li> </ul>
Vaccine	<ul style="list-style-type: none"> <li>HDCV or PCECV 1.0 mL, intramuscularly in the deltoid area (for children anterolateral aspect of the thigh is acceptable), one each on days 0 and 3. Vaccines should never be administered in the gluteal area.</li> </ul>

# CDC Guidelines: Rabies PEP for previously immunized Individuals

[Rabies Post-exposure Prophylaxis | Rabies | CDC](#)

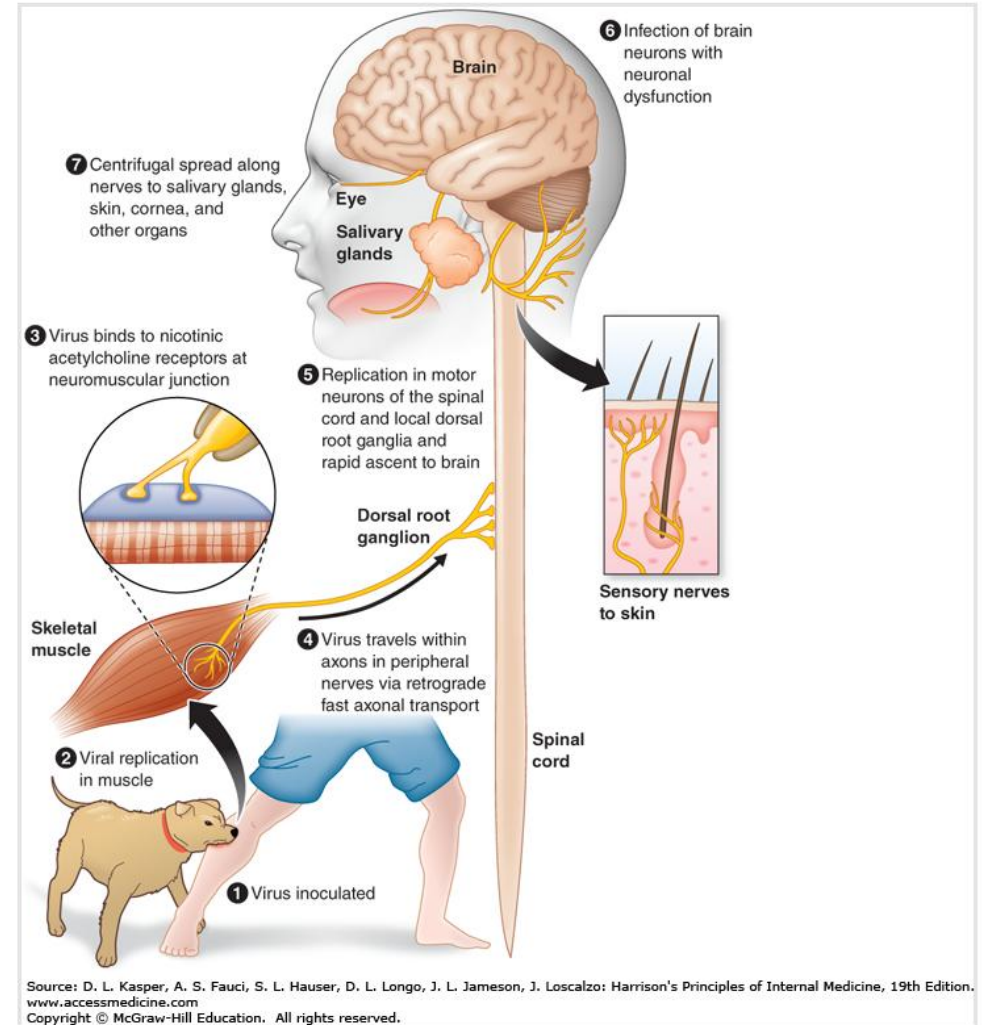
# PEP Details

- Pregnancy is not a contraindication for rabies PEP
- Rabies PEP is recommended regardless of the interval since exposure
- Intervals: strict adherence to recommended intervals
- Location: rabies vaccine should not be given into the gluteal muscle
- HRIG can be administered up to day 7 after the vaccine series is started.



# Human Rabies

- Direct contact with saliva or brain/nervous system tissue from an infected animal.
- Incubation typically 2 – 3 months
- Initial symptoms: fever, pain, paresthesia at wound site
- Moves to CNS: inflammation of the brain and spinal cord
- 2 forms of rabies:
  - Furious rabies
  - Paralytic rabies (20%)



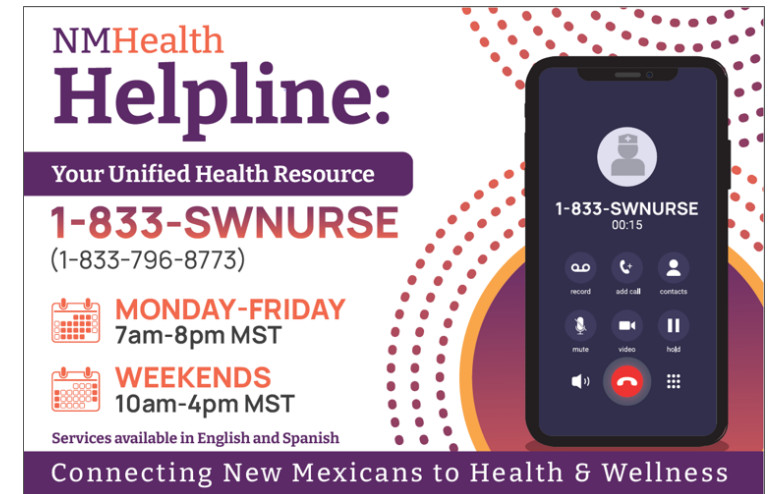


# Reporting in NM

- Rabies vaccination is required for dog and cats
- Animal bites should be reported to Animal Control
  - Dog, cat or ferret --> 10 days of quarantine
  - Wild animals --> euthanized and head sent to the state lab for rabies testing
  - Animal that dies (or is euthanized) within 10 days of biting a human --> head sent to the lab for rabies testing.

For questions or guidance:

- NMDOH Help Line
- 1-833-796-8773

A graphic for the NMHealth Helpline. It features the text "NMHealth Helpline:" in purple and orange, followed by "Your Unified Health Resource" in a purple box. Below that is the phone number "1-833-SWNURSE" in large orange letters, with "(1-833-796-8773)" in smaller text. It lists hours: "MONDAY-FRIDAY 7am-8pm MST" and "WEEKENDS 10am-4pm MST". A note says "Services available in English and Spanish". At the bottom, it says "Connecting New Mexicans to Health & Wellness". On the right, there is a smartphone displaying a call interface with a contact icon, the number "1-833-SWNURSE", and a timer "00:15". The interface includes icons for record, add call, contacts, mute, video, and hold.

## 7.4.2 NMAC

# Highly Pathogenic Avian Influenza H5N1

Current Situation



# Overview

- Avian influenza A(H5N1) is widespread in wild birds worldwide. It is causing outbreaks in poultry flocks and U.S. dairy cattle herds.
- A multi-state outbreak of H5N1 influenza infection in dairy cows was first reported on March 25, 2024.
- There have been recent human cases in U.S. dairy, poultry, and wildlife workers with exposure to infected animals as well as sporadic cases in people without known exposure to infected animals.

## Many Names:

- Highly pathogenic avian influenza (HPAI).
- Bird flu
- Avian Influenza A
- H5N1
- HPAI A(H5N1) virus

## Variants:

- B3.13 - cows
- D1.1 - wild bird/poultry

The H5N1 of today is not the same as that in 1996

## Emergence and Evolution of H5N1 BIRD FLU



### 1996-1997 H5N1 bird flu virus first detected

In 1996, highly pathogenic avian influenza H5N1 virus is first identified in domestic waterfowl in Southern China. The virus is named A/goose/Guangdong/1/1996. In 1997, H5N1 poultry outbreaks happen in China and Hong Kong with 18 associated human cases (6 deaths) in Hong Kong. This virus would go on to cause more than 860 human infections with a greater than 50% death rate.

### H5N1 spreads 2003-2005

For several years, H5N1 viruses were not widely detected, however, in 2003, H5N1 re-emerges in China and several other countries to cause widespread poultry outbreaks across Asia. In 2005, wild birds spread H5N1 to poultry in Africa, the Middle-East and Europe. The hemagglutinin (HA) gene of the virus diversifies into many genetic groups (clades). Multiple genetic lineages (genotypes) are detected.



### 2014-2016 H5N6 and H5N8 viruses emerge

Gene-swapping of H5 viruses from poultry and wild birds leads to emergence/detection of H5N6 and H5N8 virus subtypes. HA diversifies further into clade 2.3.4.4 in Asia, Africa, Europe, the Middle East and North America. H5 viruses with various neuraminidase (NA) genes continue to be detected, including in U.S. wild birds and poultry.

### 2.3.4.4b viruses spread widely 2018-2020

H5N6 and H5N8 viruses become predominant globally, replacing the original H5N1 viruses. As of 2022, there have been more than 70 H5N6 human infections and 7 H5N8 human infections reported. The H5 HA diversifies further into clade 2.3.4.4b which becomes predominant in Asia, Africa, Europe, and the Middle East.



### 2021-2023 H5N1 found in Canada, US

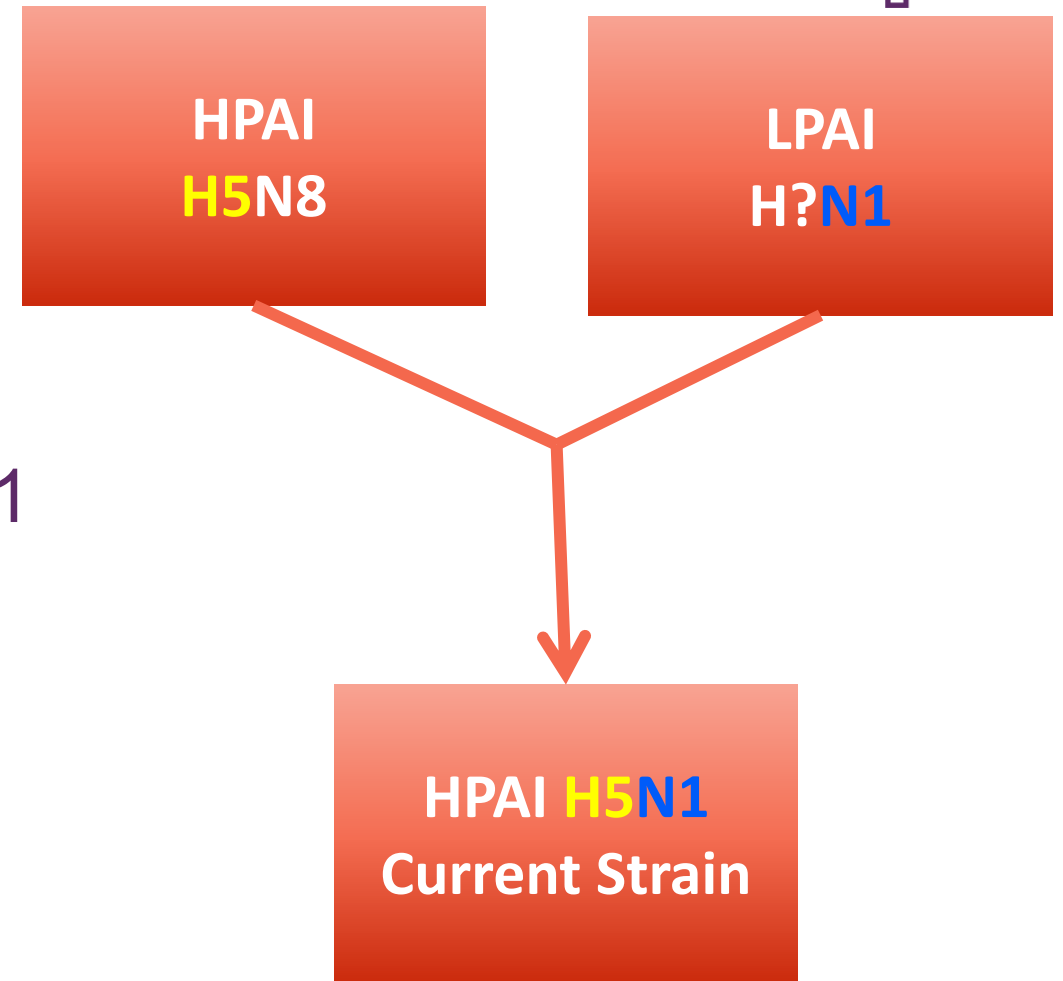
A new H5N1 virus belonging to clade 2.3.4.4b with a wild bird adapted N1 NA gene emerges. Clade 2.3.4.4b H5N1 viruses become predominant in Asia, Africa, Europe, and the Middle East by the end of 2021. The virus is detected in wild birds in Canada and the United States in late 2021. In February 2022, the virus begins causing outbreaks in U.S. commercial and backyard poultry. Rare, sporadic human infections with this H5N1 virus are detected, as well as sporadic infections in mammals. More information is available:

<https://www.cdc.gov/flu/avianflu/inhumans.htm>



# Wild Bird Adapted H5N1

- Clade 2.3.4.4b
- Arrived in US from Europe in late 2021
- Evolved from a reassortment of HPAI and LPAI strains
- Can circulate in more wild birds without killing them
  - → *More spread*



# Panzootic

## Panzootic = pandemic in animals

- Tens of millions of birds infected
- Since 2021, at least 40 new mammal species infected
- Cats, dogs, mice, zoo animals
- Tens of thousands of wild mammals have died
- *Mammal-to-mammal transmission confirmed*



More than 13,000 sea lions in Chile have died of H5N1 bird flu this year, an increase of 32% in just 3 weeks



5:06 PM · Jul 6, 2023 · 87.6K Views

339 Reposts 42 Quotes 568 Likes 25 Bookmarks

[Spillover of highly pathogenic avian influenza H5N1 virus to dairy cattle | Nature](#)

# Human Cases

National Total Cases: 68

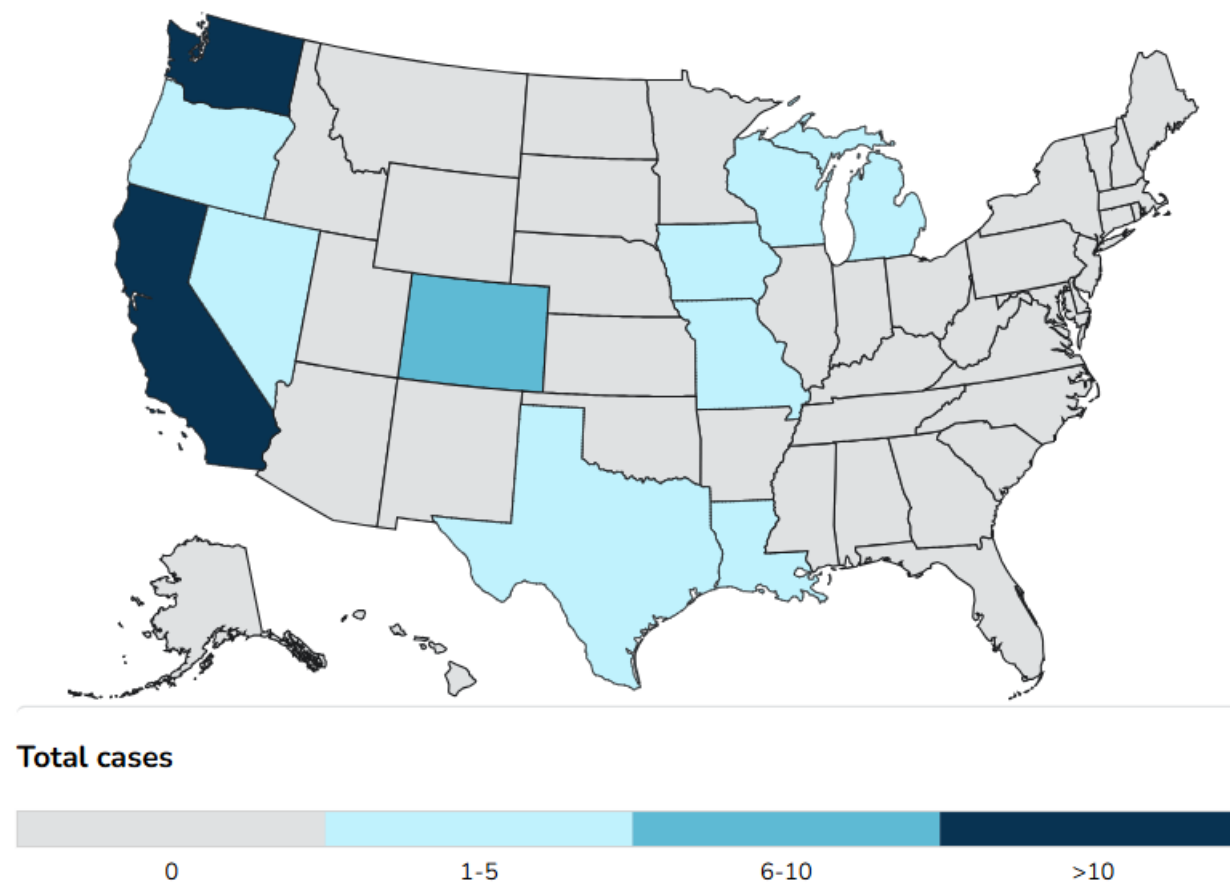
Cases	Exposure Source
41	Dairy Herds (Cattle)*
23	Poultry Farms and Culling Operations*
1	Other Animal Exposure†
3	Exposure Source Unknown‡

NOTE: One additional case was previously detected in a poultry worker in Colorado in 2022. Louisiana reported the first H5 bird flu death in the U.S.

\*Exposure Associated with Commercial Agriculture and Related Operations

†Exposure was related to other animals such as backyard flocks, wild birds, or other mammals

‡Exposure source was not able to be identified



# Panzootic → Pandemic??



Patient in Louisiana died from HPAI A(H5N1) virus

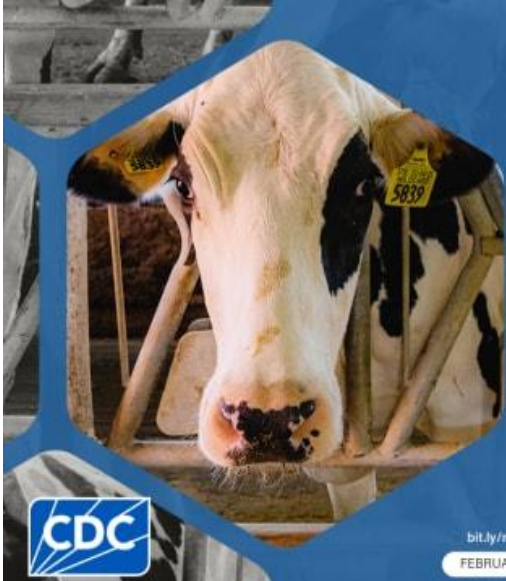
Gene sequencing identified the virus as the D1.1 genotype.

Mutations were found in the virus sequenced from the patient (and not found in the poultry samples)

Suggests the changes emerged in the patient after infection.



# Emerging Science



**CDC finds antibodies against H5 bird flu in 3 vet practitioners working with cattle\***

*Continued testing of herds, milk tanks, and those at increased risk of exposure can help better protect vets and other animal workers*

bit.ly/mm7404a2

FEBRUARY 13, 2025

\* Among 150 veterinary practitioners with exposure to cattle in the past 3 months, September 2024

**MMWR**

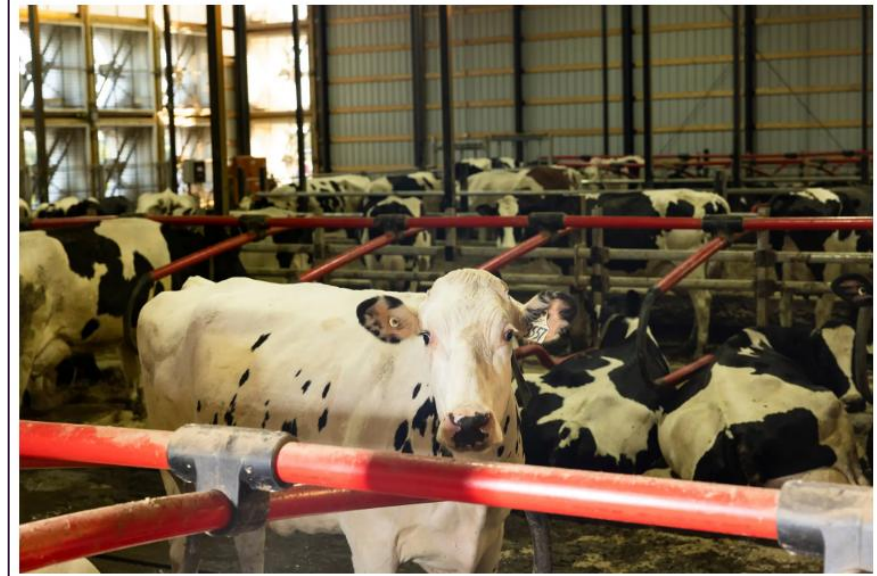
**CDC**

[Notes from the Field: Seroprevalence of Highly Pathogenic Avian Influenza A\(H5\) Virus Infections Among Bovine Veterinary Practitioners — United States, September 2024 | MMWR](#)

## *Cows Have Been Infected With a Second Form of Bird Flu*

A new version of the virus is widespread in wild birds but had not previously been detected in cows.

▶ Listen to this article · 4:14 min [Learn more](#)  Share full article    200



# Who is a suspected H5N1 case?

Individuals with relevant exposure history AND signs/symptoms consistent with influenza.

- Exposure to animals or humans suspected or confirmed to be infected with H5N1
  - Wild birds & mammals
  - Dairy cattle, poultry
  - Cats, dogs, other domestic animals
- Unpasteurized (raw) milk
- Raw pet foods
- Conjunctivitis
- Acute respiratory symptoms
- Gastrointestinal symptoms



Figure 1. Conjunctivitis with Subconjunctival Hemorrhage in Both Eyes.

Uyeki TM, Milton S, Abdul Hamid C, Reinoso Webb C, Presley SM, Shetty V, Rollo SN, Martinez DL, Rai S, Gonzales ER, Kniss KL, Jang Y, Frederick JC, De La Cruz JA, Liddell J, Di H, Kirby MK, Barnes JR, Davis CT. Highly Pathogenic Avian Influenza A(H5N1) Virus Infection in a Dairy Farm Worker. *N Engl J Med*. 2024 Jun 6;390(21):2028-2029. doi: 10.1056/NEJMc2405371. Epub 2024 May 3. PMID: 38700506.

## Examples of exposures to humans by risk level

### High Risk

- Direct contact with:
  - Sick or dead wild birds
  - Dead poultry
  - Water contaminated with sick or dead birds
  - Dairy cattle exhibiting signs of avian influenza
- Direct contact with
  - Raw milk
  - Raw pet food

### Lower Risk

- Bird feeders at house
- Healthy backyard poultry
- Outdoor cats that hunt
  - Sick outdoor cat: unknown risk
- Sick dog
- Dead/ill wild birds or mammals nearby; no direct contact
- Travel

# Person Under Investigation Suspected H5N1 Infection

**Contact  
NMDOH**

1-833-796-8773  
1-833-SWNURSE

If meets  
epidemiological  
criteria:

**Infection  
Control**

**Testing**

**Treatment**

**Contact &  
Airborne  
Precautions**

**Submit  
appropriate  
specimens to  
NMDOH State  
Laboratory  
Division**

**Oseltamivir:  
Initiate  
promptly, do  
not wait for  
test results**

**Monitoring & Prophylaxis of Contacts**

# CDC Guidance

[Interim Guidance for Infection Control Within Healthcare Settings When Caring for Confirmed Cases, Probable Cases, and Cases Under Investigation for Infection with Novel Influenza A Viruses Associated with Severe Disease | Bird Flu | CDC](#)

[Interim Guidance on Specimen Collection and Testing for Patients with Suspected Infection with Novel Influenza A Viruses Associated with Severe Disease or with the Potential to Cause Severe Disease in Humans | Bird Flu | CDC](#)

[Interim Guidance on the Use of Antiviral Medications for Treatment of Human Infections with Novel Influenza A Viruses Associated with Severe Human Disease | Bird Flu | CDC](#)

# Resources

- New Mexico Public Health Achievements During the 20th Century; Prepared by: Brad Whorton, Ph.D. Statistician and Special Projects Coordinator; Aug 2002; <https://www.nmhealth.org/data/view/vital/1884/>
- Rabies Post-exposure Prophylaxis | Rabies | CDC
- 7.4.2 NMAC
- NMDOH - Highly Pathogenic Avian Influenza
- Update on Highly Pathogenic Avian Influenza A(H5N1) Virus for Clinicians and Healthcare Centers | COCA | CDC
- Clinician Brief: Evaluating and Managing Patients Exposed to Animals or Persons Infected with Novel Influenza A Viruses of Public Health Concern | Bird Flu | CDC
- Interim Guidance on Specimen Collection and Testing for Patients with Suspected Infection with Novel Influenza A Viruses Associated with Severe Disease or with the Potential to Cause Severe Disease in Humans | Bird Flu | CDC
- Interim Guidance for Infection Control Within Healthcare Settings When Caring for Confirmed Cases, Probable Cases, and Cases Under Investigation for Infection with Novel Influenza A Viruses Associated with Severe Disease | Bird Flu | CDC

# Questions?

Miranda Durham, MD

Chief Medical Officer, NMDOH

Mobile: (505) 231-6040

Miranda.Durham@doh.nm.gov

24/7 NMDOH Helpline:

1-833-SWNURSE

1-833-796-8773

